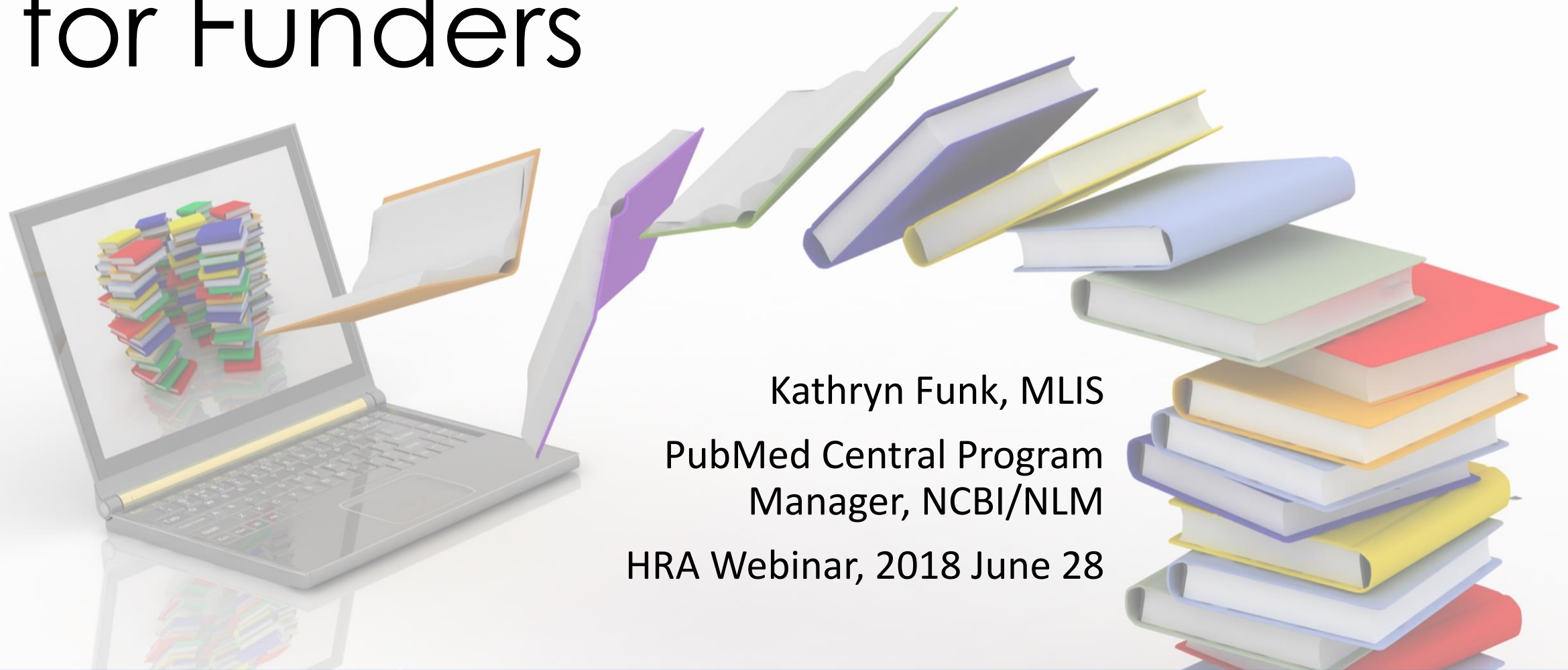


NLM Public Access Support for Funders



Kathryn Funk, MLIS
PubMed Central Program
Manager, NCBI/NLM
HRA Webinar, 2018 June 28

Introduction to...

- PubMed Central (PMC)
- PMC Submission Methods
 - Manuscript Submission
 - Journal Submission
- Publications, Awards, and Compliance
 - Linking awards to publication in My Bibliography
 - Discovery of funded publications in PubMed and PMC
- Associating Data with Publications
- Resources for Your Researchers





What is PubMed Central?

1) Journal Archive

- Since 2000
- 2,100 journals currently “participate” in PMC
- Includes current and historical content

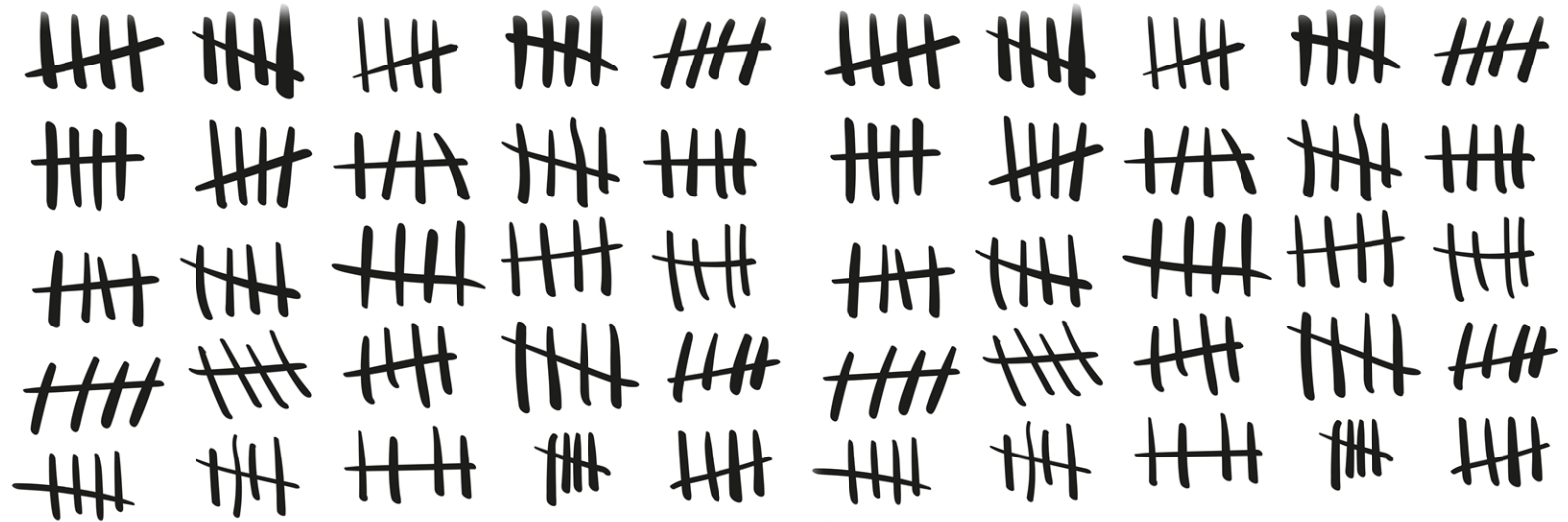


2) Funder Repository

- Since 2005
- 13 U.S. funders (in addition to HRA) and ~30 international funders
- Includes author manuscripts and publisher versions of record

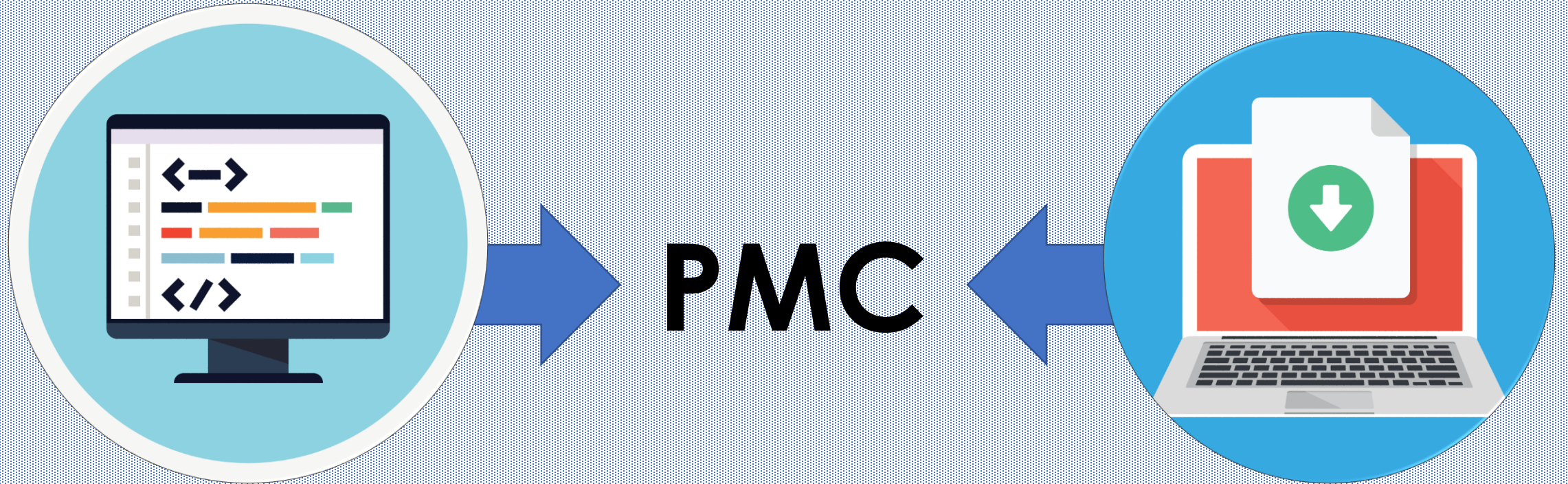
1 billion articles

retrieved from PMC in 2017



<https://nlmdirector.nlm.nih.gov/2017/12/19/happy-one-billion-pubmed-central/>

How Articles Get Into PMC



Participating Journal

- Publisher-supplied versions of record
- Submitted directly to PMC in XML format

Author Manuscript

- Author-supplied (or approved) peer reviewed version accepted for publication
- Submitted to NIH Manuscript Submission (NIHMS) system in Word/PDF/etc. format

<https://www.ncbi.nlm.nih.gov/pmc/about/submission-methods/>



Author Manuscript Submission

When to submit?

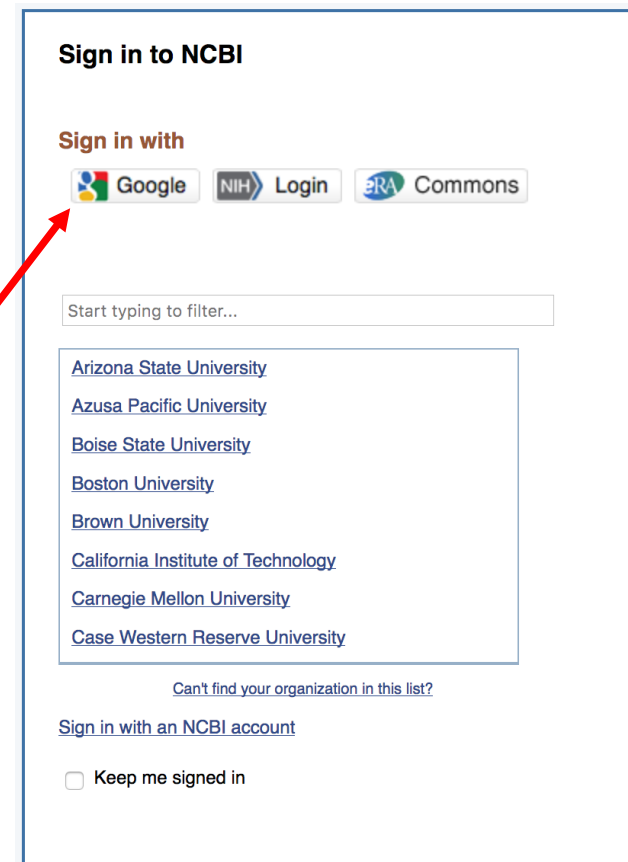
- After a paper is accepted for publication
- After award data updated in HRA Open

Where to submit?

- NIH Manuscript Submission System

How to access?

- Via the “Publishers and Others” NCBI sign in route



<https://www.nihms.nih.gov>

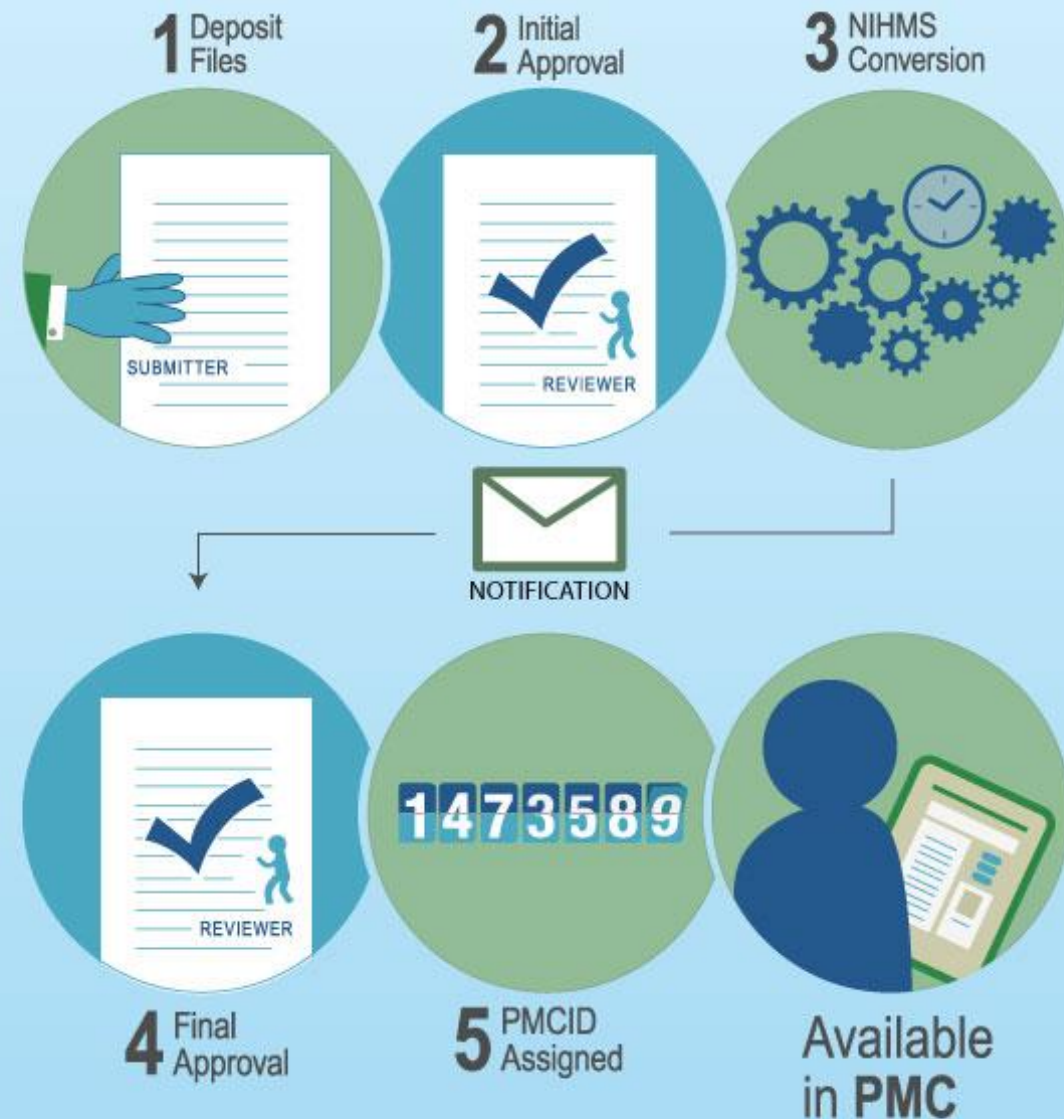


Author Manuscript Submission

... then what?

1. NIHMSID (HRAMS) is assigned at time of deposit – This is also when award data is added.
2. Awardee signs off on initial deposit
3. Manuscript converted to PMC (XML) format
4. Awardee reviews PMC-ready version
5. PMCID assigned

NIHMS Process



<https://www.nihms.nih.gov>

<https://www.ncbi.nlm.nih.gov/pmc/articles/PMC5603910/>

NCBI Resources How To

PMC US National Library of Medicine National Institutes of Health

PMC Advanced Journal list

Journal List > Health Research Alliance Author Manuscripts > PMC5603910

Health Research Alliance
Author Manuscript
Resulting from research funded by an HRA-member organization and accepted for publication in a peer-reviewed journal.

Eur Cardiol. Author manuscript; available in PMC 2017 Sep 19.
Published in final edited form as:
Eur Cardiol. 2017 Summer; 12(1): 52–7.
doi: [10.15420/ecr.2017.2.2](https://doi.org/10.15420/ecr.2017.2.2)

PMCID: PMC5603910
HRAMSID: HRAMS901758
PMID: [28936235](https://pubmed.ncbi.nlm.nih.gov/28936235/)

Health Literacy and Atrial Fibrillation: Relevance and Future Directions for Patient-centred Care

Konstantinos N Aronis,¹ Brittany Edgar,² Wendy Lin,³ Maria Auxiliadora Parreiras Martins,⁴ Michael K Paasche-Orlow,⁵ and Jared W Magnani⁶

Author information ► Copyright and License information ► Disclaimer

See other articles in PMC that cite the published article.

Abstract Go to: ☑

Atrial fibrillation (AF) is a common cardiac arrhythmia with significant clinical outcomes, and is associated with high medical and social costs. AF is complicated for patients because of its specialised terminology, long-term adherence, symptom monitoring, referral to specialty care, array of potential interventions and



<https://www.ncbi.nlm.nih.gov/pmc/articles/PMC5953540/>

PMC US National Library of Medicine National Institutes of Health

PMC Advanced Journal list

Journal List > eLife > v.7; 2018 > PMC5953540

eLIFE

Recent content
About eLife
For authors
Sign up for alerts

eLife. 2018; 7: e33953.
Published online 2018 May 15. doi: [10.7554/eLife.33953](https://doi.org/10.7554/eLife.33953)

PMCID: PMC5953540
PMID: [29761785](https://pubmed.ncbi.nlm.nih.gov/29761785/)

Discovery and characterization of a prevalent human gut bacterial enzyme sufficient for the inactivation of a family of plant toxins

Nitzan Koppel,¹ Jordan E Bisanz,² Maria-Eirini Pandelia,³ Peter J Turnbaugh,^{2,4} and Emily P Balskus^{1,5}

Ruth Emily Ley, Reviewing Editor
Ruth Emily Ley, Max Planck Institute for Developmental Biology, Germany;
Author information ► Article notes ► Copyright and License information ► Disclaimer

Abstract Go to: ☑

Although the human gut microbiome plays a prominent role in xenobiotic transformation, most of the genes and enzymes responsible for this metabolism are unknown. Recently, we linked the two-gene ‘cardiac glycoside reductase’ (*cgr*) operon encoded by the gut Actinobacterium *Eggerthella lenta* to inactivation of the cardiac medication and plant natural product digoxin. Here, we compared the genomes of 25 *E. lenta*



Associating Funding & Tracking Publications in PubMed and PMC





NIHMS

Associating awards with PubMed citations and NIHMS-submitted PMC author manuscripts



1 Deposit Files



2 Initial Approval

Award / funding data must be associated with a submission to proceed beyond this point in the NIHMS process.

NIH Manuscript Submission System

About ▼ Help ▼

Test Submission for Dataset Demonstration

Journal: [Nature](#) NIHMSID 16339 [Provide citation](#)

1. Title Information

2. Add Funding

3. Upload Files

4. Check Files

5. Set Reviewer & Embargo

Enter project support information

Search by:

First Name

Last Name

AND/OR

Grant/Project ID

DDCF_

Search Results:

Grantee/PI	Select
Kathryn Funk	<input checked="" type="checkbox"/>
Donald Kohn	<input checked="" type="checkbox"/>

DDCF_201310...
DDCF_201312...
DDCF_201313...
DDCF_201314...
DDCF_201410...
DDCF_201411...
DDCF_2009092: Beta-globin gene correction in hematopoietic stem cells for sickl...
DDCF_2012073: Development of new tools to examine host-microbe interactions in the reproductive tract
DDCF_2013095: Nitric oxide supplementation as a therapeutic intervention in argi...
DDCF_2013096: An integrated genomics approach to identifying causal difference...
DDCF_2013098: Ketamine Plus Lithium as a Novel Pharmacotherapeutic Strategy...
DDCF_2013099: Systems immunology to understand antiviral deficits during preg...

Cancel Submission

← Title Information

Upload Files ▶



My Bibliography

Associating awards with PubMed citations
and Publisher-supplied PMC articles

22: ☐ Sivaprakasam S, Bhutia YD, Ramachandran S, Ganapathy V. [Cell-Surface and Nuclear Receptors in the Colon as Targets for Bacterial Metabolites and Its Relevance to Colon Health](#). *Nutrients*. 2017 Aug 10;9(8). pii: E856. doi: 10.3390/nu9080856. Review. PubMed PMID: 28796169; PubMed Central PMCID: PMC5579649.

☒ NIH Public Access Compliance: Complete. PMCID: [PMC5579649](#)

NIH Funding:

R01 CA190710 - SLC5A8 is a conditional tumor suppressor in colon linked to dietary fiber content

[Add or delete award](#)

User Tips:

- Access My NCBI via Google
- My NCBI-Google account can be linked to other existing accounts
- An HRA icon should appear at the top of the web page if all the correct steps have been followed

Assign Awards

Use the checkboxes to assign awards to the selected citations:

NIH Awards HRA Awards Search/Add other awards

My awards:

- ☒ P41 RR001348 - FRET IN ALPHA-1-ANTITRYPSIN:CHIMOTRYPSIN COMPLEXES; R2 C TERMINUS IN ELECTRON TRANSFER IN RIBONUCLEOTIDE REDUCTASE; SINGLE-MOLECULE STUDY OF THE HETEROGENEITY OF SERPIN POLYMERIZATION; STUDY OF SERPIN INHIBITION MECHANISM; TIME RESOLVED IR: SERPIN INHIBITION MECHANISM
- ☒ R01 AG010599 - SERPIN INTERACTION WITH SERINE PROTEINASES; ANTICHYMOTRYPSIN INTERACTION WITH SERINE PROTEINASES
- ☐ R01 AG010599-15 - SERPIN INTERACTION WITH SERINE PROTEINASES

Other awards:

- HYDROXYUREA IN SUBJ ON POTENT ANTIRETROVIRALS; ACTG 175-MONOTHERAPY VS COMBINATION THERAPY IN HIV PTS, CD4 200-500; ACTG 285 STEM CELL MOBILIZATION AND HARVESTING WITH FILGRASTIM; ACTG 315 RITONAVIR, ZIDOVUDINE AND LAMIVUDINE IN ADVANCED HIV 1 DISEASE ...
- ☐ P30 AI036214 - International Program
- ☐ R01 AI076558 - Orally Active Nucleoside Phosphatase Inhibitors for the Treatment of Hepatitis C Virus
- ☒ R01 GM065978-05 - Spectroscopic Study of Protein Dynamics
- ☐ T32 AI007447 - University of Colorado HIV Research Center

Note:
☒ indicates that some, but not all of the selected citations are funded.

Assign Awards

Use the checkboxes to assign awards to the selected citations:

NIH Awards HRA Awards Search/Add other awards

Search by Grant #/name:

R01
RL1 HD058295
RL1 HD058296
R01 DA024640
R01 GM073887
R01 CA126189

Grant name Search

Save Cancel

<https://www.ncbi.nlm.nih.gov/books/NBK53595/#mybibliography>

PMC

Create alert Journal List Advanced

Display Settings: Summary, 20 per page, Sorted by Pub Date Send to:

Search results

Items: 1 to 20 of 216 << First < Prev Page 1 of 11 Next > Last >>

☐ [SynDIG4/Prrt1 Is Required for Excitatory Synapse Development and Plasticity Underlying Cognitive Function](#)

1. Lucas Matt, Lyndsey M. Kirk, George Chenaux, David J. Specia, Kyle R. Puhger, Michael C. Pride, Mohammad Qneibi, Tomer Haham, Kristopher E. Plambeck, Yael Stern-Bach, Jill L. Silverman, Jacqueline N. Crawley, Johannes W. Hell, Elva Díaz
Cell Rep. Author manuscript; available in PMC 2018 Mar 16.
Published in final edited form as: Cell Rep. 2018 Feb 27; 22(9): 2246–2253. doi: 10.1016/j.celrep.2018.02.026
PMCID: PMC5856126
[Article](#) [PubReader](#) [PDF–955K](#) [Citation](#)

☐ [Impact of L-citrulline supplementation on oxygen uptake kinetics during walking](#)

2. John Ashley, Youngdeok Kim, Joaquin U. Gonzales
Appl Physiol Nutr Metab. 2018 Jun; 43(6): 631–637. Published online 2018 Feb 2. doi: 10.1139/apnm-2017-0696
PMCID: PMC5980789
[Article](#) [PubReader](#) [PDF–470K](#) [Citation](#)

☐ [Endothelial-dependent dilation following chronic hypoxia involves TRPV4-mediated activation of endothelial BK channels](#)

3. Jay S. Naik, Benjimen R. Walker
Pflugers Arch. 2018; 470(4): 633–648. Published online 2018 Jan 29. doi: 10.1007/s00424-018-2112-5
PMCID: PMC5854740
[Article](#) [PubReader](#) [PDF–2.0M](#) [Citation](#)

To see what publications are linked to awards from a given funder, search PMC or PubMed on:

FUNDER NAME[gr]

https://www.nlm.nih.gov/bsd/grant_acronym.html#other_fund

https://www.ncbi.nlm.nih.gov/books/NBK3827/#pubmedhelp.Grant_Number_GR

In PubMed...

- You will find any citation that has been associated with a funder's awards
- Not a guarantee that the paper is publicly accessible in PMC

Primary sources of HRA award data:

- NIHMS
- My NCBI – My Bibliography

Appl Physiol Nutr Metab. 2018 Jun;43(6):631-637. doi: 10.1139/apnm-2017-0696. Epub 2018 Feb 2.

Impact of l-citrulline supplementation on oxygen uptake kinetics during walking.

Ashley J¹, Kim Y^{1,1}, Gonzales JU^{1,1}.

Author information

Abstract

Supplementation with l-citrulline (Cit) has been shown to improve muscle oxygenation and oxygen uptake kinetics during moderate- to high-intensity cycling in young men. The aim of this study was to test the hypothesis that Cit would improve oxygen uptake kinetics during walking in older and young adults. In a randomized, double-blind study, 26 (15 women, 11 men) adults between the ages of 20-35 years (n = 15) and 64-86 years (n = 11) completed 7-day periods of taking placebo and Cit (6 g/day) in a crossover manner. Participants walked on a treadmill at 40% heart rate reserve while pulmonary oxygen uptake was measured using indirect calorimetry. Net oxygen cost, mean response time (MRT), and the oxygen deficit were calculated before and after each supplement period. There was no significant change (P > 0.05) in net oxygen cost, MRT, or the oxygen deficit after Cit in older adults, while young adults showed a decrease (P = 0.05) in the oxygen deficit after Cit that tended (P = 0.053) to be different than the change after placebo. Sex-stratified analysis revealed that Cit decreased MRT (P = 0.04, Cohen's d = 0.41) and the oxygen deficit (P < 0.01, Cohen's d = 0.56) in men with the change after Cit being greater than the change after placebo (MRT: -4.5 ± 2.1 vs. 3.4 ± 2.1 s, P = 0.01; deficit: -0.15 ± 0.05 vs. 0.01 ± 0.05 L, P = 0.02). All oxygen uptake parameters were unchanged (P > 0.05) following Cit and placebo in women. Cit does not alter the oxygen cost of moderate-intensity walking in young or older adults, but Cit improved the rate of rise in oxygen uptake at exercise onset in men.

KEYWORDS: $\dot{V}O_2$ kinetics; cinétique du $\dot{V}O_2$; coût énergétique; energy cost; exercice physique; exercise; l-citrulline; marche; walking

PMID: 29394491 PMCID: PMC5980789 DOI: 10.1139/apnm-2017-0696

Free PMC Article



Images from this publication. See all images (2) Free text



Grant support

Grant support

15BGIA22710012/American Heart Association-American Stroke Association/United States

In PMC...

- You will see papers that are publicly accessible by default
- You can include embargoed articles in the search results by using the facet on the left-hand side of the results to get a global picture of the number of compliant papers associated with your awards

The screenshot shows the PMC (PubMed Central) search results page. The search query is "American Heart Association-American Stroke Association[gr]". The page displays search results with a left-hand facet menu and a main results area.

Article attributes

- Author manuscripts
- Digitized back issues
- MEDLINE journals
- Open access
- Retracted

Text availability clear

- ☒ **Include embargoed articles**

Publication date

- 1 year
- 5 years
- 10 years
- Custom range...

Research Funder

- NIH
- AHRQ
- ASPR
- CDC
- EPA
- FDA
- NASA
- NIST
- VA

Display Settings: Summary, 20 per page, Sorted by Pub Date Send to: ▼

Search results

Items: 1 to 20 of 253 << First < Prev Page 1 of 13 Next > Last >>

Filters activated: embargoed articles. [Clear all](#) to show 216 items.

- ☐ **Role of Chronic Stress and Exercise on Microvascular Function in Metabolic Syndrome**
1. Kayla W. Branyan, Evan R. DeVallance, Kent A. Lemaster, R. Christopher Skinner, Randy Bryner, I. Mark Olfert, Eric E. Kelley, Jefferson C. Frisbee, Paul D. Chantler
Med Sci Sports Exerc. Author manuscript; available in PMC 2019 May 1.
Published in final edited form as: Med Sci Sports Exerc. 2018 May; 50(5): 957–966.
doi: 10.1249/MSS.0000000000001531
PMCID: PMC5898979
Currently embargoed: Free in PMC on May 1, 2019; [PubMed](#)
- ☐ **Septic Shock Non-Survivors Have Persistently Elevated Acylcarnitines Following Carnitine Supplementation**
Michael A. Puskarich, Charles R. Evans, Alla Karnovsky, Arun K. Das, Alan E. Jones, Kathleen A. Stringer
Shock. Author manuscript; available in PMC 2019 Apr 1.
Published in final edited form as: Shock. 2018 Apr; 49(4): 412–419. doi: 10.1097/SHK.0000000000000997
PMCID: PMC5847421

Set up alerts to monitor

PMC [Create alert](#) [Journal List](#) [Advanced](#)

Display Settings: Summary, 20 per page, Sorted by Pub Date

Send to:

Search results

Items: 1 to 20 of 22

<< First < Prev Page 1 of 2 Next > Last >>

- ☐ [Implementing Community-based Health Planning and Services in impoverished urban communities: health workers' perspective](#)

Adanna Uloaku Nwameme, Philip Teg-Nefaah Tabong, Philip Baba Adongo
BMC Health Serv Res. 2018; 18: 186. Published online 2018 Mar 20. doi: 10.1186/s12913-018-3005-1
PMCID: PMC5859666
[Article](#) [PubReader](#) [PDF-400K](#) [Citation](#)

- ☐ [Next wave of interventions to reduce under-five mortality in Rwanda: a cross-sectional analysis of demographic and health survey data](#)

Cheryl L. Amoroso, Marie Paul Nisingizwe, Dominique Rouleau, Dana R. Thomson, Daniel M. Kagabo, Tatien Bucyana, Peter Drobac, Fidele Ngabo
BMC Pediatr. 2018; 18: 27. Published online 2018 Feb 5. doi: 10.1186/s12887-018-0997-y
PMCID: PMC5799916
[Article](#) [PubReader](#) [PDF-825K](#) [Citation](#)

- ☐ [A novel twelve class fluctuation test reveals higher than expected mutation rates for influenza A viruses](#)

Matthew D Pauly, Megan C Procario, Adam S Lauring
eLife. 2017; 6: e26437. Published online 2017 Jun 9. doi: 10.7554/eLife.26437
PMCID: PMC5511008
[Article](#) [PubReader](#) [PDF-1022K](#) [Citation](#)

My NCBI » Saved Searches

Your PMC search

Name of saved search: DDCF[gr]

Search terms: DDCF [gr]
[Test search terms](#)

Would you like e-mail updates of new search results?

- ☐ No, thanks.
☒ Yes, please.

E-mail: funkkm@ncbi.nlm.nih.gov ([change](#))

Schedule:

Frequency: Monthly

Which day? the first Sunday

Formats:

Report format: Summary

Number of items:

Send at most: 5 items ☐ Send even when there aren't any new results

Any text you want to be added at the top of your e-mail (optional):

Save

Cancel

<https://www.ncbi.nlm.nih.gov/books/NBK3830/>



U.S. National Library of Medicine

NCBI

National Center for Biotechnology Information

Datasets in PMC

Associating data with publications

How do datasets get in to PMC?

Supplementary Material

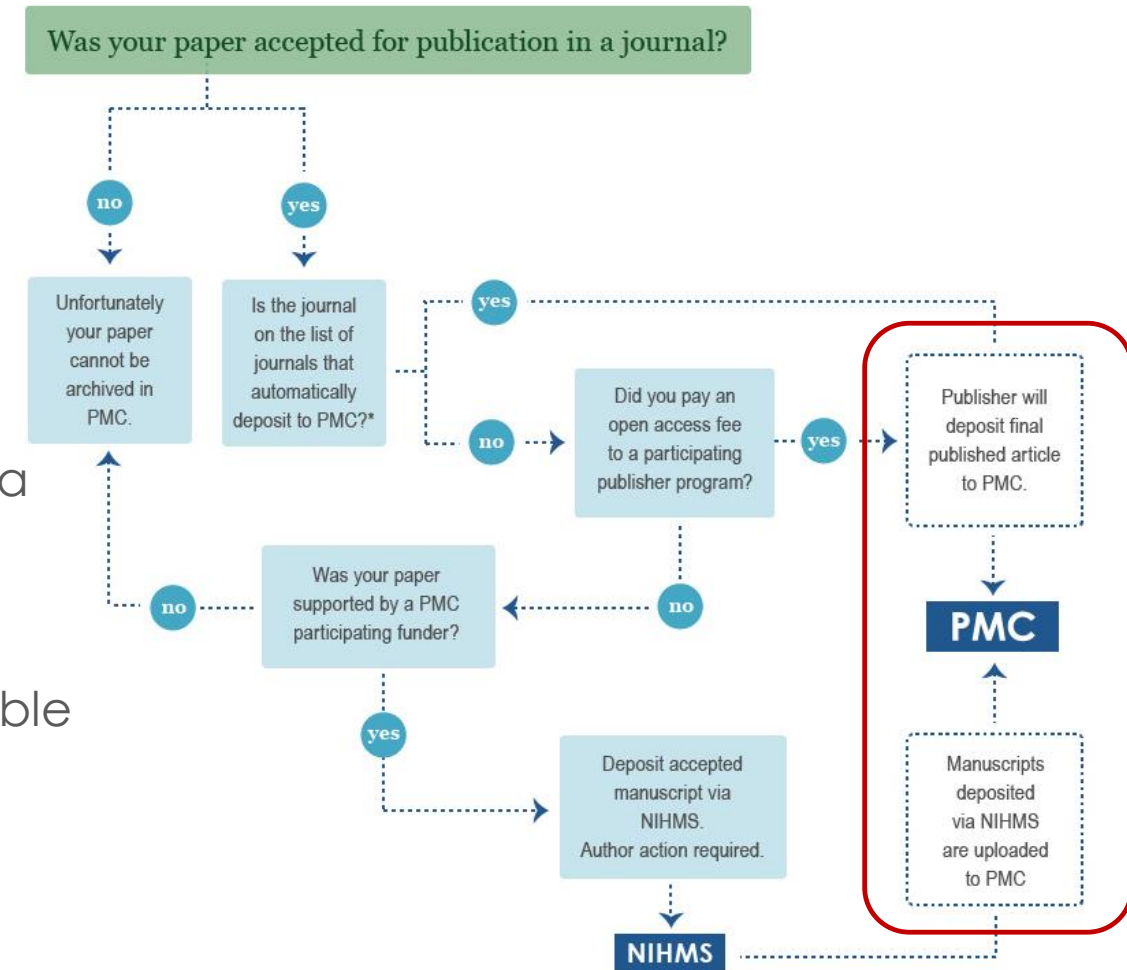
- PMC policy requires all referenced supplementary data files to be deposited with the article or manuscript.

Data Citations

- Authors are also encouraged to make datasets available in a public repository and include the relevant data citation(s) in the paper.

NIHMS Deposit

- Funded authors who are required to deposit the author manuscript to PMC can also supply data files at the time of deposit.



<https://www.ncbi.nlm.nih.gov/pmc/about/submission-methods/>
<https://www.ncbi.nlm.nih.gov/pmc/about/guidelines/#supplementary>

Supplementary Data in PMC

Supplementary Material Section

Author Manuscript

Supplementary Material

Go to: ☒

1

Supplementary File 1: Gene correspondence table for *S. pneumoniae* strains T4, 19F and D39. Related to [Figure 1](#), Figure S1, Table S1.
[Click here to view.](#) (156K, xlsx)

2

Supplementary File 2: Growth of *S. pneumoniae* strains T4, 19F and D39 in different nutrient media: THY, SDMM, CDM, and MCDM. Related to [Figure 1](#).
[Click here to view.](#) (62K, xlsx)

3

Supplementary File 3: Tn-Seq and RNA-Seq data in this study. Related to [Figures 1–5](#).
[Click here to view.](#) (3.1M, xlsx)

Examples of what you will find in this section:

- Computer code
- Mathematical or computational models
- Audio or video clips
- Oversized tables
- Intervention protocols
- Primary or supplementary data sets
- Expanded methodology sections
- Additional figures

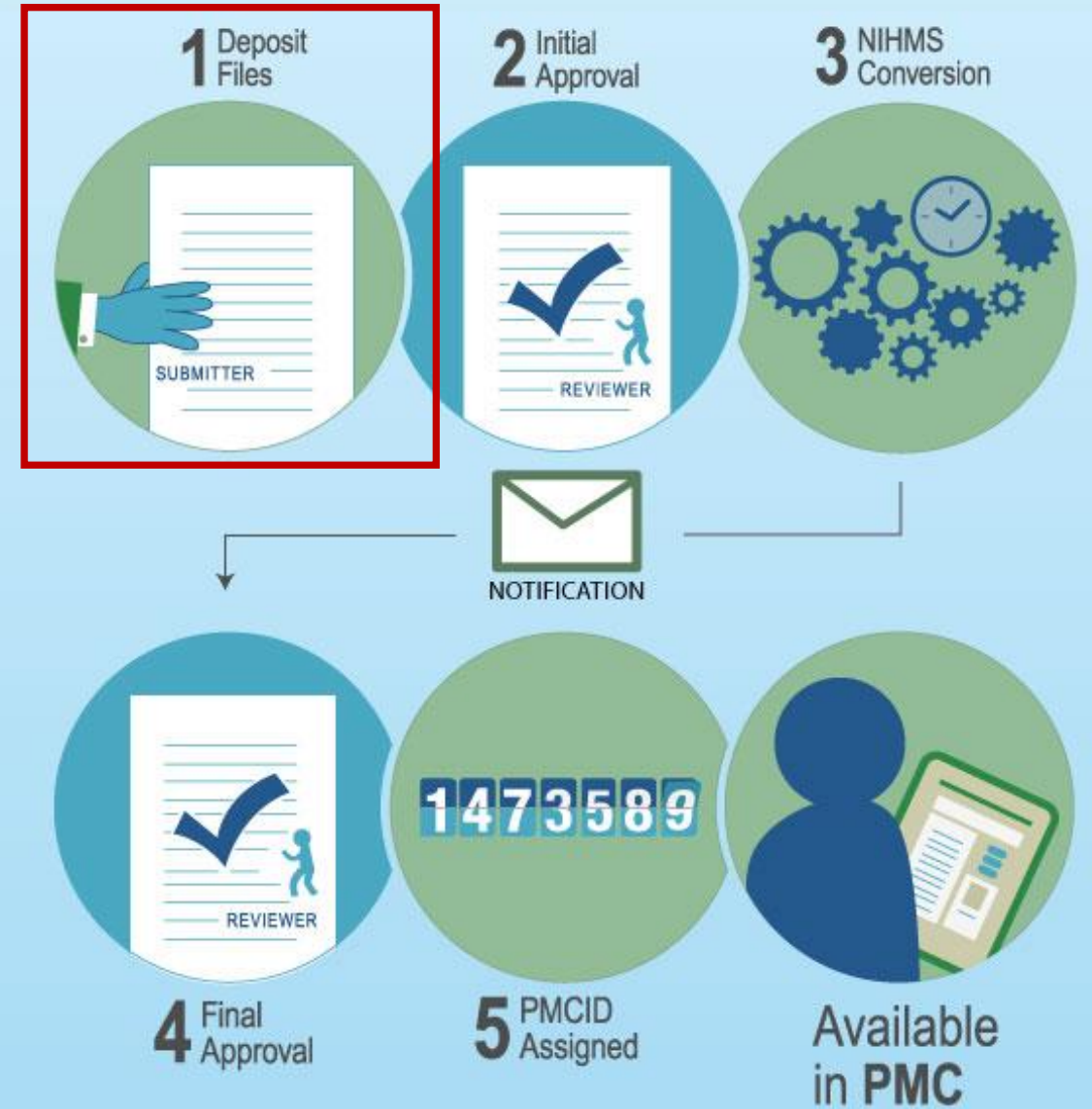
PMC Search: [has suppdata\[filter\]](#)

Source: Publication Manual of APA (6th ed.)

Dataset Deposit in NIHMS

- Data files should be supplied with other manuscript files in Step 1 of NIHMS process
- Author must have funding from a PMC-participating funder to deposit
- NIHMS can accept nearly any file type as supplemental; .doc, .pdf, .xls, .csv, .tiff, .jpg, .eps, .ai, mp4 are the most common types received

NIHMS Process



<https://www.nihms.nih.gov/>

Dataset Deposit in NIHMS

- Upload as Supplemental file type
- Provide general dataset label (e.g., Dataset 1, Data 2)
- Can provide as many data files as necessary
- Data file(s) must be 2 GB or less

U.S. Department of Health & Human Services

NIH Manuscript Submission System

About ▾ Help ▾ Manuscript List Kathryn Funk Sign off

Test Submission for Dataset Demonstration

Journal: [Nature](#) NIHMSID 16339 [Provide citation](#)

1. Title Information 2. Add Funding 3. Upload Files 4. Check Files 5. Set Reviewer & Embargo

Please upload all files associated with your manuscript, including supplemental files, and move to the next step.

Type	Label	File	Size	Date	Remove
Manuscript		Data notes_2017.docx	154.7	2017-09-27 10:01:45	X
Supplemental	Dataset 1	Browse... Data avail statement sample-2017jul.xlsx			X
Supplemental	Dataset 2	Browse... NIH-funded supp data sample-2016jul.xlsx			X

Add another [Manuscript](#), [Figure](#), [Table](#), [Supplemental](#)

[Save & Exit](#) [Cancel Submission](#) [◀ Add Funding](#) [Check Files ▶](#)

Choosing a file type

Labeling files

Adding files

Uploading datasets (optional)

All referenced supplementary files are required to be deposited with the manuscript. However, authors also have the option to upload additional supporting data files (under 2 GB) with a file type of "Supplemental" to be made accessible with the manuscript in PMC. These files should be given a descriptive label (e.g., Dataset 1).

<https://www.nihms.nih.gov/>

Data Citations and Statements in PMC

Data Availability Statement

Data Availability

Go to: ☑

All relevant data are within the paper and its Supporting Information files. Protein structure files were obtained from Protein Data Bank. Protein structure accession and site mapping are listed in S1 Table (<https://doi.org/10.6084/m9.figshare.4910141.v2>).

Data Citations

Data Citations

Go to: ☑

1. Ibanez J. M.. Australian Antarctic Data Centre. 2017 <https://doi.org/10.4225/15/58e6edfc522cf>
2. Ibanez J. M.. Australian Antarctic Data Centre. 2017 <https://doi.org/10.4225/15/58e47c1be64b8>
3. Ibanez J. M.. Australian Antarctic Data Centre. 2017 <https://doi.org/10.4225/15/58e47c33f2500>
4. Ibanez J. M.. Australian Antarctic Data Centre. 2017 <https://doi.org/10.4225/15/58e580cfe8c95>
5. Ibanez J. M.. Australian Antarctic Data Centre. 2017 <https://doi.org/10.4225/15/58e47be626ee5>
6. Ibanez J. M.. Australian Antarctic Data Centre. 2017 <https://doi.org/10.4225/15/58e47c03e652a>

Examples of what you will find in these sections:

- “Data available upon request”
- References to supplementary material
- NCBI database accession numbers (GEO, GenBank, dbGap, SRA)
- General data repository record DOIs (figshare, Dryad)
- Government data repository links
- Personal servers

Data Citations in PMC

S Gavrilov, RP Harvey & VE Papaioannou. Mus musculus T-box 2 (Tbx2), mRNA. NCBI Nucleotide. 2014:NM_009324.2. [NM_009324](#)

```
<!--Data reference: NCBI Nucleotide: pub-id-type="accession" assigning-authority="NCBI"
contains version details-->
<ref id="bib13">
  <element-citation publication-type="data">
    <person-group person-group-type="author">
      <name>
        <surname>Gavrilov</surname>
        <given-names>S</given-names>
      </name>
      <name>
        <surname>Harvey</surname>
        <given-names>RP</given-names>
      </name>
      <name>
        <surname>Papaioannou</surname>
        <given-names>VE</given-names>
      </name>
    </person-group>
    <year iso-8601-date="2014">2014</year>
    <data-title>Mus musculus T-box 2 (Tbx2), mRNA</data-title>
    <source>NCBI Nucleotide</source>
    <pub-id pub-id-type="accession" assigning-authority="NCBI"
      xlink:href="http://www.ncbi.nlm.nih.gov/nuccore/120407038"
      >NM_009324</pub-id>
    <version designator="NM_009324.2">NM_009324.2</version>
  </element-citation>
</ref>
```

“Data citations should facilitate access to the data and any associated metadata, code, or related materials.”

<https://www.ncbi.nlm.nih.gov/pmc/pmcdoc/tagging-guidelines/article/dobs.html#dob-datacitations>

<http://jats4r.org/data-citations>

Tips and Tools for Your Researchers

- Complete HRA Open tasks **BEFORE** using NLM resources
- Always access NLM resources (NIHMS, My Bibliography) via **Google account** the first time (accounts can be linked for subsequent visits)
- Review "How Papers Get Into PMC" guidance to **determine what submission method applies** -
<https://www.ncbi.nlm.nih.gov/pmc/about/submission-methods/>
- Familiarize yourself with the two main steps required of authors in the **NIHMS submission process** -
<https://www.youtube.com/watch?v=IIEBtfnSqMA>
- Remember to reserve the right to make your paper available in PMC, acknowledge all supporting awards, and cite data



Questions?

