

# Boehringer Ingelheim and Patient Advocacy: Partnering for Patients

Steven Brunette, Ph.D.

Senior Associate Director

Patient Affairs and Engagement

Ridgefield, Connecticut

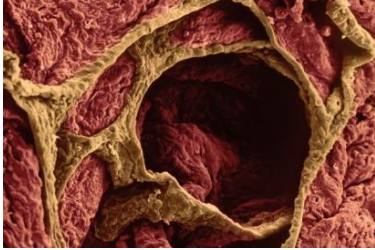
# Boehringer Ingelheim in Brief



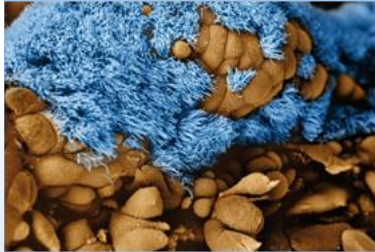
Boehringer Ingelheim Center  
Corporate Headquarters in Ingelheim, Germany

- Family-owned global corporation
- Founded 1885 in Ingelheim, Germany
- 142 Affiliated Companies Worldwide
- Focus on Human Pharmaceuticals, Animal Health and Biopharmaceuticals
- ~50,000 Employees Worldwide
- 16 production facilities in 11 countries

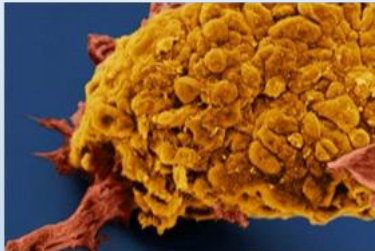
# Boehringer Ingelheim's Research Focus



Immunology and Respiratory Diseases



Oncology

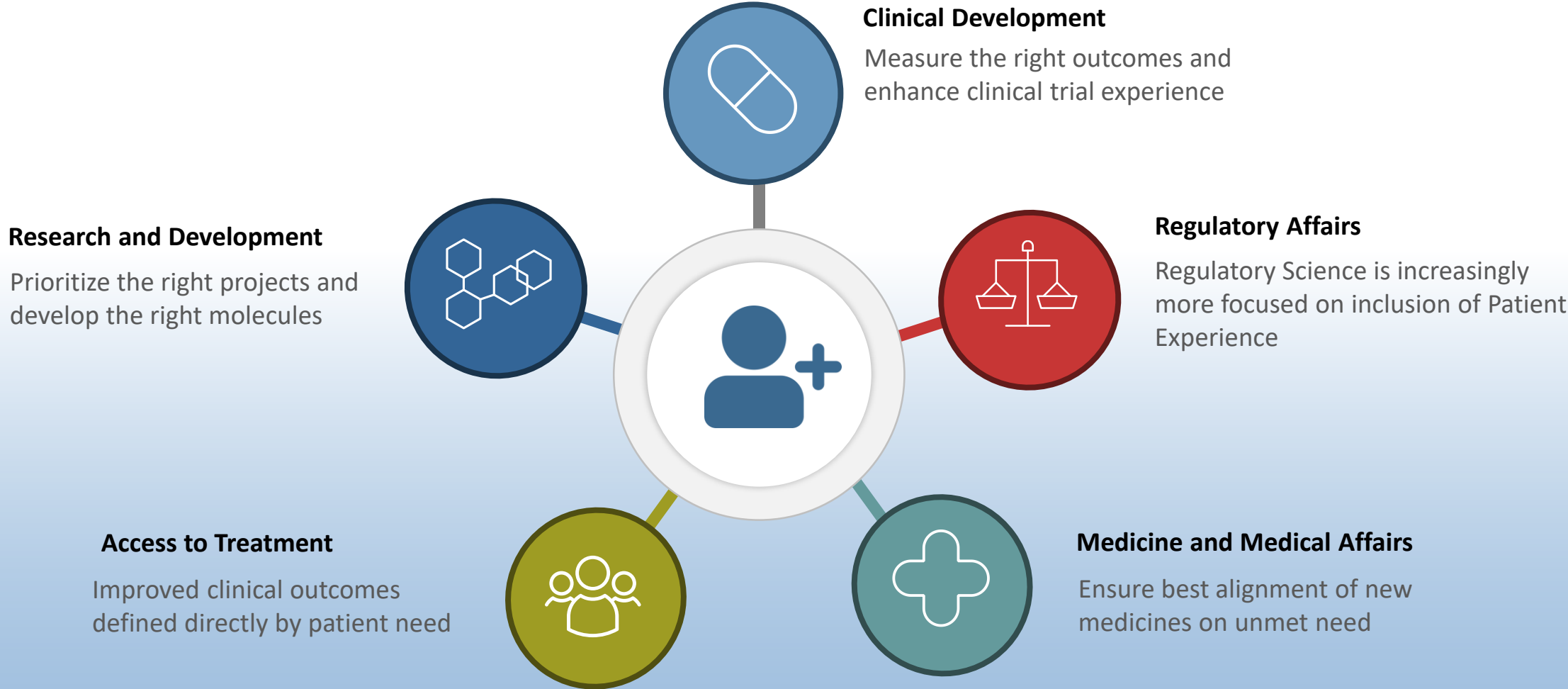


Cardiometabolic Diseases

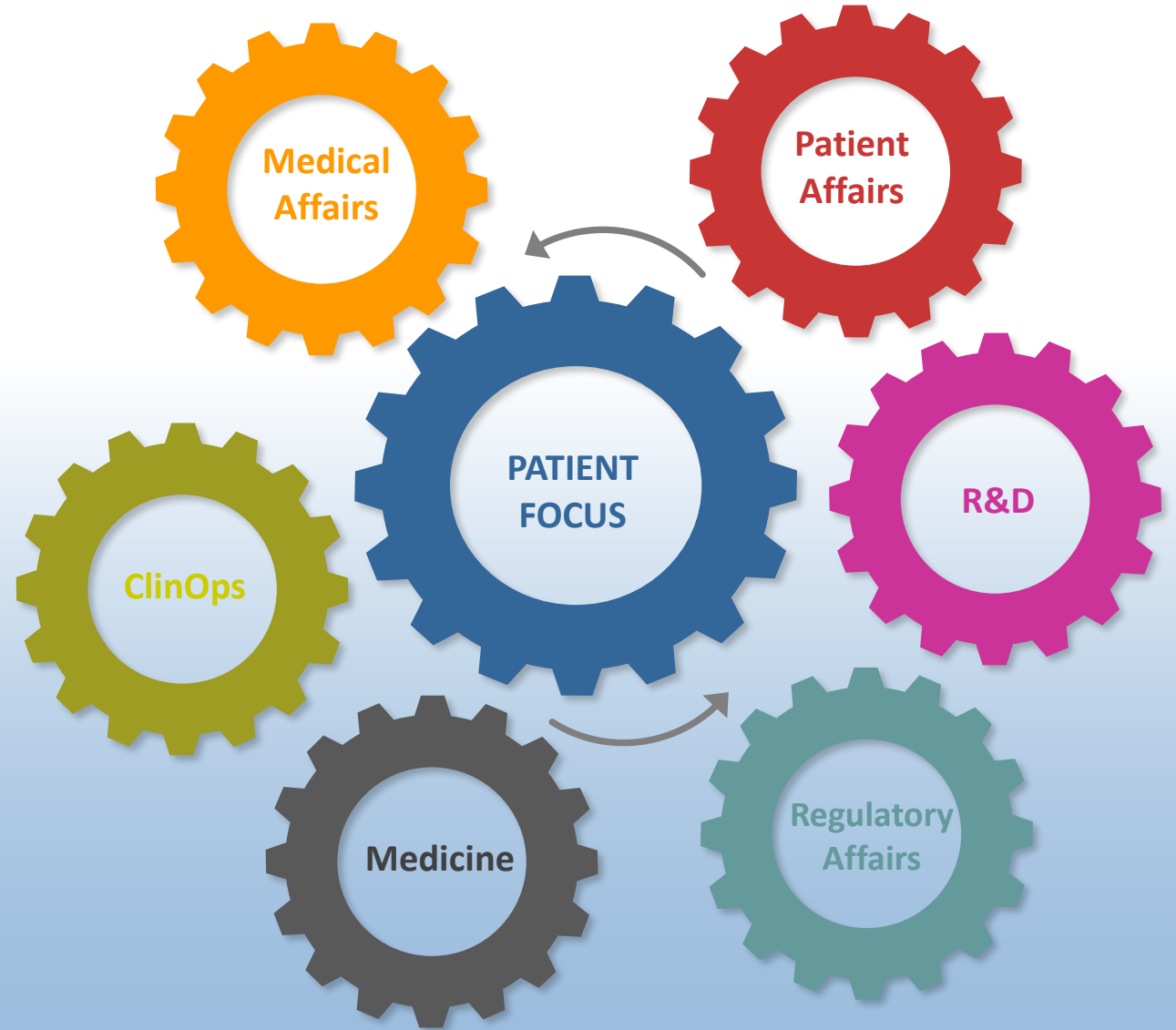
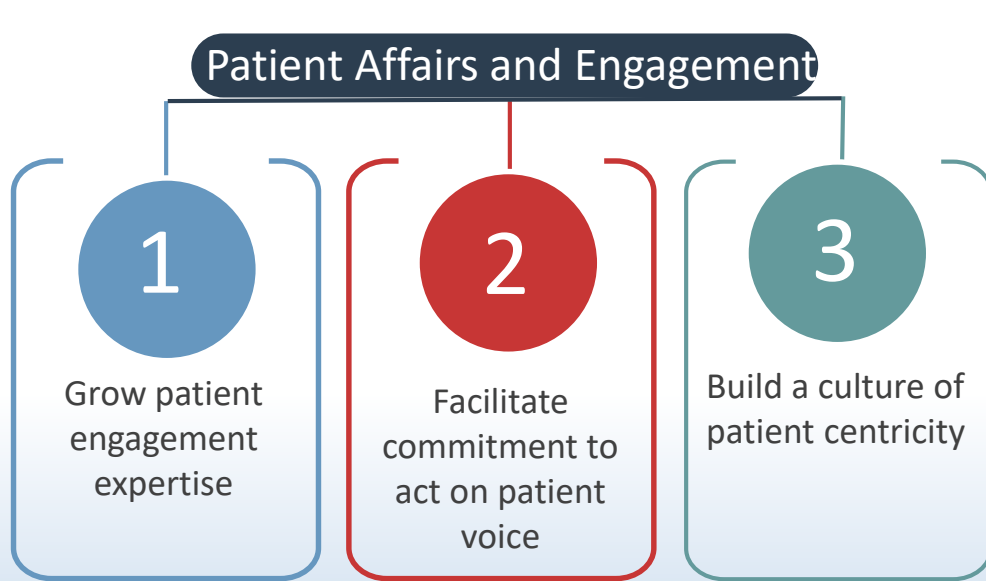


Diseases of the Central Nervous System

# Need for a Focus on Understanding the Patient Experience



# Enabling BI to Act on Patient Needs and Expectations



# Partnership with Patient Advocacy Organizations is Essential

## Many Areas of Synergy



Partnering with Patient Advocacy Organizations enhances our understanding of the unmet needs and expectations of the patient community

# Advancing Research – Patient Registries

- **Patient Registries are a powerful tool that offer a lens into the outcomes and drivers of disease in a real-world setting**
- **Registries are large endeavors best positioned in a precompetitive/consortia space**
- **Not just the patient voice, but everything about the patient**

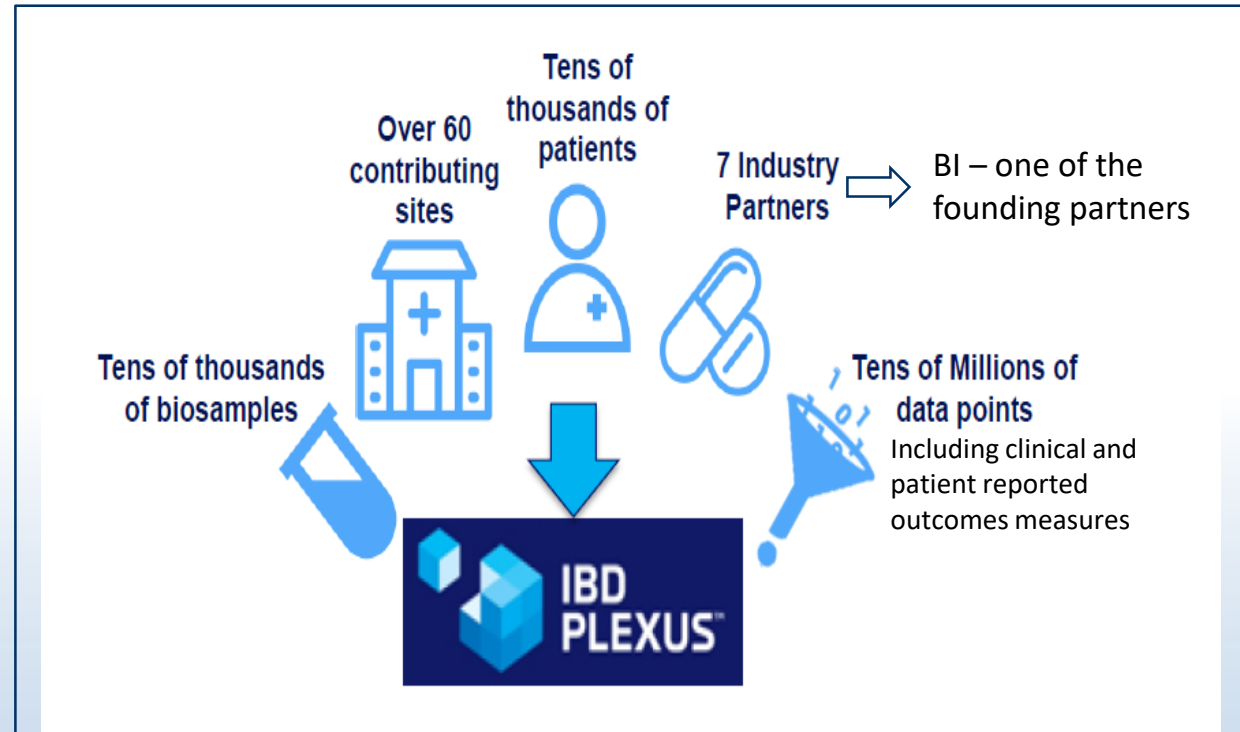


Advancing  
Research



- A unique opportunity to partner with the Crohn's & Colitis Foundation

# IBD plexus platform – Deep Characterization of Patients



**SPARC :**  
Study of a Prospective Adult Research Cohort with IBD  
N=2506; planned 7000

**RISK:**  
Pediatric inception cohort of Crohn's patients N=1812 completed

**IBD QORUS:**  
Foundation's Quality of Care initiative  
N=2947; planned 20000

**CCFA Partners:**  
Internet-based cohort study  
N=14692 completed



# Novel Insights Through Collaboration with the Crohn's and Colitis Foundation

Detailed patient phenotype information associated with biological samples that can be leveraged for clinical protocols development

In depth information on medication and biologics usage by patients



In depth information on site experience with different patient phenotypes

Deep understanding of patient relevant outcome information

# The Power of IBD plexus and Potential Value for Innovation

---

- Large studies of IBD patients (CD and UC) in a “real world” setting with both cross-sectional and longitudinal data
- Deep patient phenotyping including clinical information, patient outcomes and biological samples
- Detailed characterization of pediatric and adult IBD patients
- Extensive patient outcomes information

# Innovation Does not come without Challenges

---

**Strength of Plexus stems from having a group of industry experts, sharing a common goal, convene to advance IBD research in a pre-competitive space**

- Complexities with integration of multiple types of data and information from multiple sources
- Real world dataset with some proportion of missing data requiring rules to handle the data for analysis
- Multiple Pharma with different priorities to integrate

The IBD Plexus team is working with their partners towards solutions...

## Concluding Thoughts....

---

- At BI, patient insights, perspective and preferences are sought and acted upon early, often and throughout the drug discovery and development continuum
- Partnership with Patient Advocacy Organizations is essential for ensuring that drug discovery and development is aligned with the needs and expectations of the patient community
- Collaborating with the Crohn's & Colitis Foundation within IBD Plexus offers a unique opportunity to understand well beyond simply the patient voice and drive innovative research and development