

Beyond Borders: Go International Act Locally/Think Globally

Discussion Leaders:

**Diane Bovenkamp, PhD
Vice President, Scientific Affairs
BrightFocus Foundation**

**Krissa Smith, PhD
Director, Research Programs
Susan G. Komen**

**HRA Annual Meeting
September 2019**

International Grants: Why?

- **Diseases have no borders:**
 - **Disease is same/similar in other countries**
 - **No geopolitical border to next idea for a cure**
 - **Scientific community is international**
 - **Additional data sets (Europe, Australia, Canada, etc.)**
 - **Access to different clinical trial volunteer base**
- **Ability to translate learnings from one setting into another (we are more the same than we are different)**
- **Diversify your organization's funding portfolio**

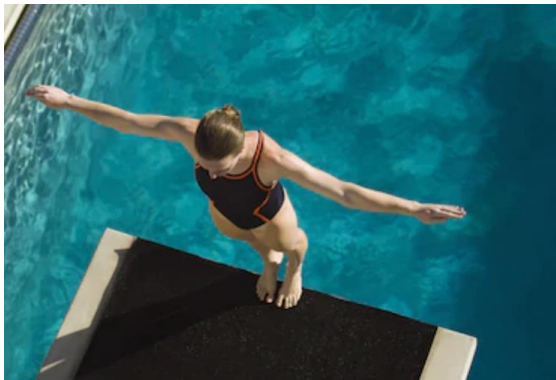
Take the Plunge



- **Grant to US Institution with International collaborators**



- **Grant to an International Institution (with or without US collaborators)**



- **Implementation grant (research or infrastructure) in an underserved community in another country**

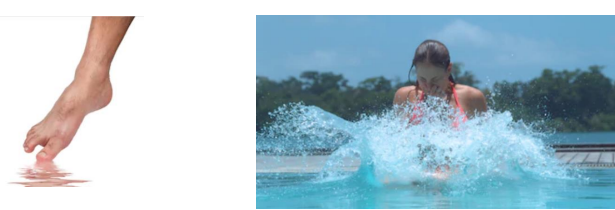
Increasing Commitment



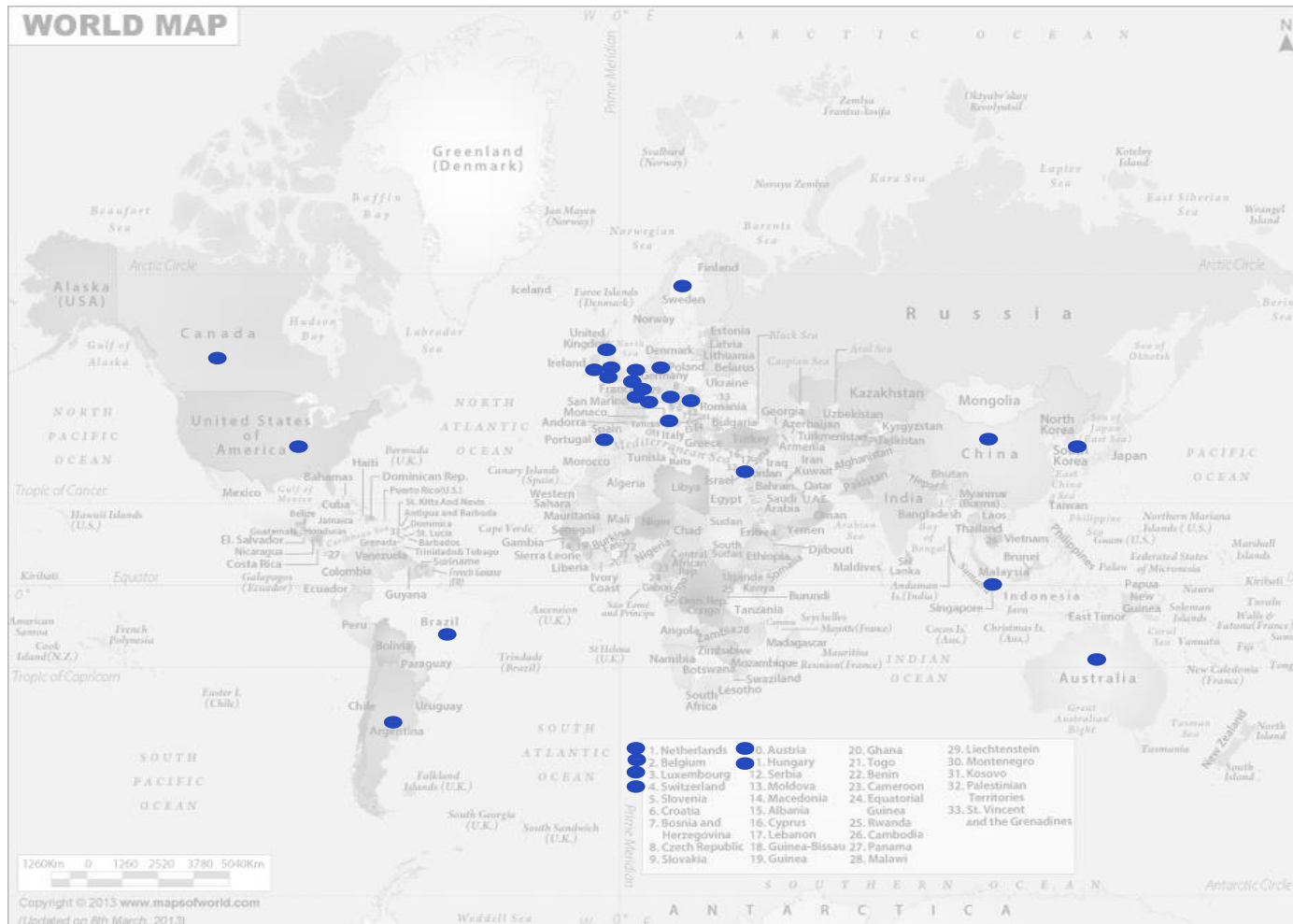
BrightFocus Awards Are All International

- *Our vision: help people live free from diseases of mind and sight*
- Investigator-initiated, high-risk research
- **International (no citizenship or country requirements)**

- **Alzheimer's Disease Research**
 - Standard: \$300,000 total for 3 years
 - Postdoctoral Fellowship: \$200,000 for 2 years
- **Macular Degeneration Research**
 - Standard: \$200,000 total for 2 years (Postdocs can be CoPIs)
- **National Glaucoma Research**
 - Standard: \$200,000 total for 2 years (Postdocs can be CoPIs)



Diseases Have No Borders... Neither Do BrightFocus Awards



Blue Dot=
Since
Inception
(24
Locations)



Conquering the Global Breast Cancer Crisis

- Over 200 grants funded to international organizations in over 60 countries
- Understanding the breast cancer landscape
- Working with governments and public health agencies to strengthen health systems
- Building capacity of health care providers
- Delivering health education and support tailored to specific underserved communities
- Convening thought leaders to drive strategic health plans



Komen works to shape the global cancer agenda, strengthen national health care systems, and catalyze local responses to breast cancer.



African Breast Cancer - Disparities in Outcomes at 3 years (ABC-DO)

- First pan – African breast cancer cohort of 2200 women with breast cancer newly diagnosed during 2015-2017 presenting at public hospital in Namibia, Nigeria, Uganda, South Africa and Zambia.
- Key collaboration: Centrally coordinated at the International Agency for Research on Cancer (IARC) via a modern mHealth real-time data collection system.
- As of January 2019, with a median follow-up of just over 2 years, early deaths post-diagnosis (an excessive 600+ to date) are largely due to late stage at first diagnosis. Survival rates are alarmingly low.
- Similar challenges to US low resource settings:
 - Patient adherence, allocation of resources, patient/clinical team communication, transportation, etc.

**What would inspire your
organization to consider
international grants?**

What do you need to know?

Considerations

Considerations

Costs:

- **Legal review**
- **Payments (wire transfers etc.)**
- **Vetting of institution (ensure funding is compliant with anti-terrorism laws)**

Identifying which grants to fund:

- **Instructions to review committee, unfamiliarity with applicant and their resource/situation**
- **Challenges for international application (different systems)**
- **International reviewers**

Administering the grant/grant agreements:

- **Limited oversight due to distance**
- **Intellectual Property laws**
- **Monitoring ethical requirements (IRB/IACUC compliance)**
- **European data protection/GDPR-compliance**

Administrative Requirements?

Administrative Requirements?

Costs:

- **Financial Office – Institutional Anti-Terrorism/Sanctions (LexisNexis is the gold standard)**
- **Payment: wire transfer (instead of check or ACH)**
- **Paid in USD (budget line items, conversion)**
- **Translate key documents into English (IACUC, IRB, IP policy, non-profit determination, W-9 equivalence, etc.)**

Identifying which grants to fund:

- **Grants staff available for answering applicant questions**
- **Help with writing a 'U.S.-style' grant, letters of support, etc.**
- **Check previous funders as references**

Administrative Requirements?

Administering the grant/grant agreements:

- **IACUC/IRB/Recombinant DNA (U.S. equivalent)**
- **GDPR (European email/communication opt-out)**
- **Contractual clauses: Export Laws, Governing Law, etc.**
- **IP special considerations (ex. Germany PI owns IP and needs to sign as full party to contract—not 'read and understood')**
- **Tax laws, international fundraising, IRS 990 reporting**
- **Limitations**
- **Budgeting for visas (more regulation)**

Best Practices

- **Many of the info needed/process can be incumbent on international grantee institution**
- **Require contractual support documents be translated into English**
- **Lawyer give adjustable clauses to pop into regular contract template**
- **Future payments incumbent on receiving progress reports**
- **Governing law is U.S./your state/city**
- **Skype or Webex for interviews/progress check-ins**
- **Meet scientists when you go to international conference**
- **Consider time zone differences for deadlines/calls**
- **Staff can mentor applicants or have a webinar to help**

First Steps?

- **Talk to HRA member already granting internationally**
- **Check HRA listserv or other info Grants Admin group**
- <https://www.healthra.org/working-groups/grants-administration/>
- <https://www.irs.gov/charities-non-profits/form-990-filing-tips-reporting-foreign-activities-schedule-f> (IRS guidance)
- https://grants.nih.gov/grants/policy/nihgps/HTML5/section_16/16.1_general.htm (NIH policy guidance for foreign grants)
- **Add International CoPI or Collaborator on U.S. grant, but institution of PI responsible for administering subcontract**
- **Advertise RFP in international journals**



Burning Questions?