

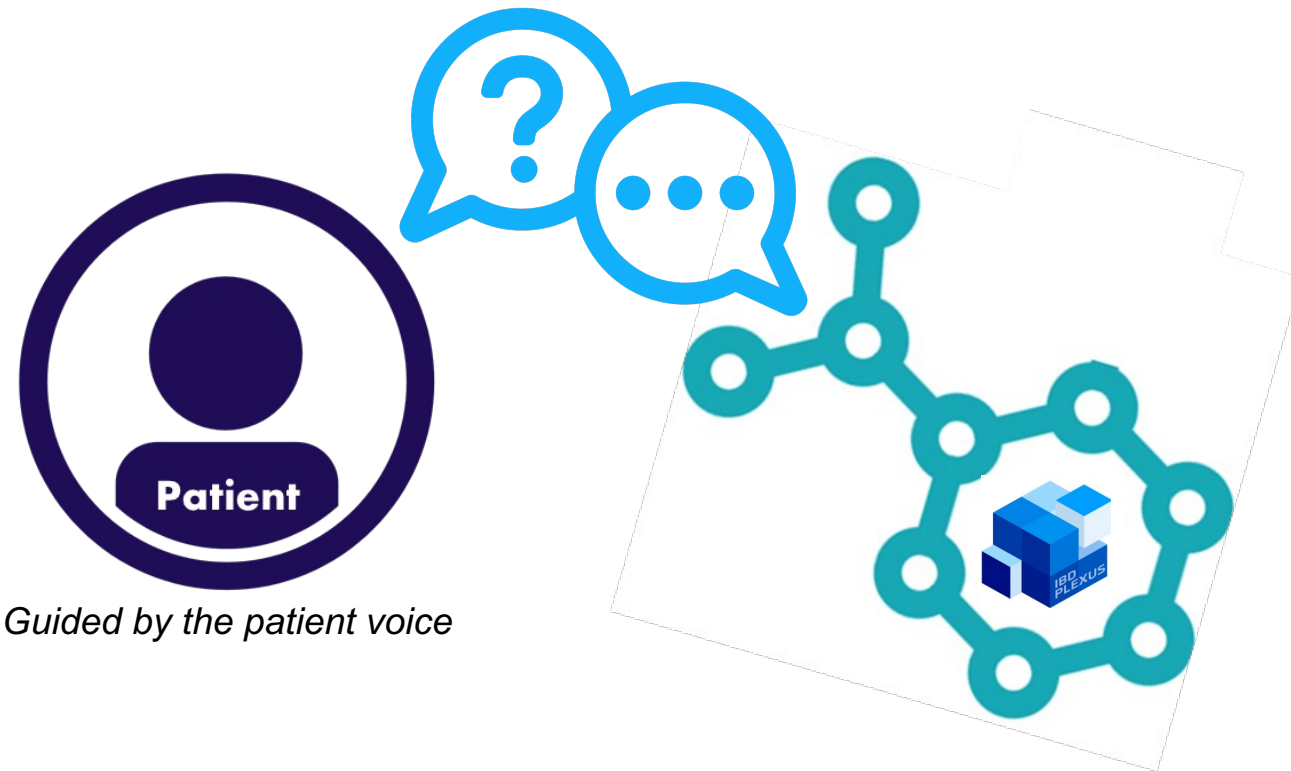


# GETTING TO BETTER TREATMENTS THAT MATTER TO PATIENTS THROUGH BUILD OF A COLLABORATIVE RESEARCH PLATFORM

Angela Dobes, MPH  
Senior Vice President, IBD Plexus

*October 2023*

# Answering the most important questions in IBD



# Laying the groundwork for better treatments

65% to 80% of IBD patients do not experience full remission<sup>1</sup>

## Why?



Biology and environmental triggers not well understood



Need novel treatments



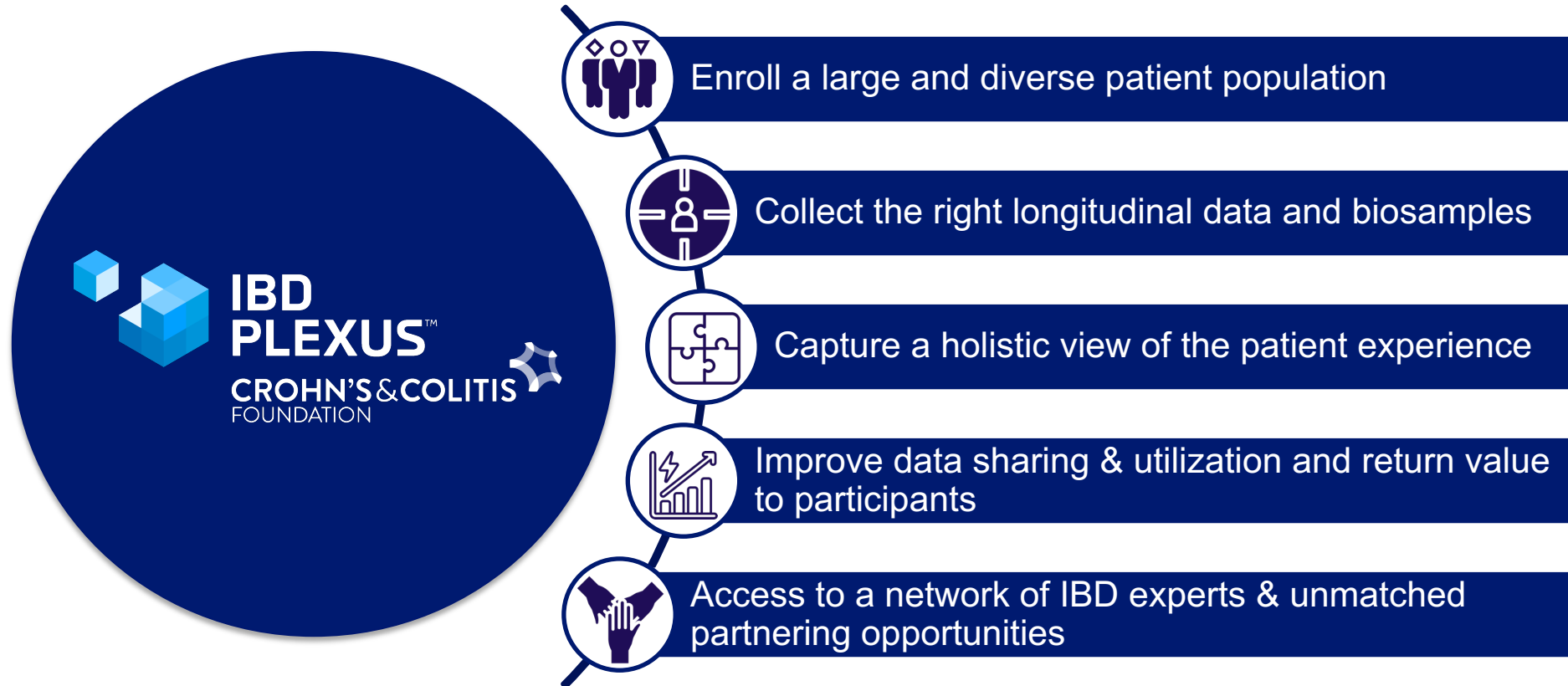
Lack of optimal endpoints and biomarkers



Access to care issues

# A solution to problems too big or complex to solve alone

High impact research infrastructure & ecosystem



# Data collection done the right way

Research opportunities designed to fit the patient journey



## DIRECT-TO-PATIENT

- Web-based portal
- Mobile app



## ROUTINE CARE

- Telehealth visit
- Office visit



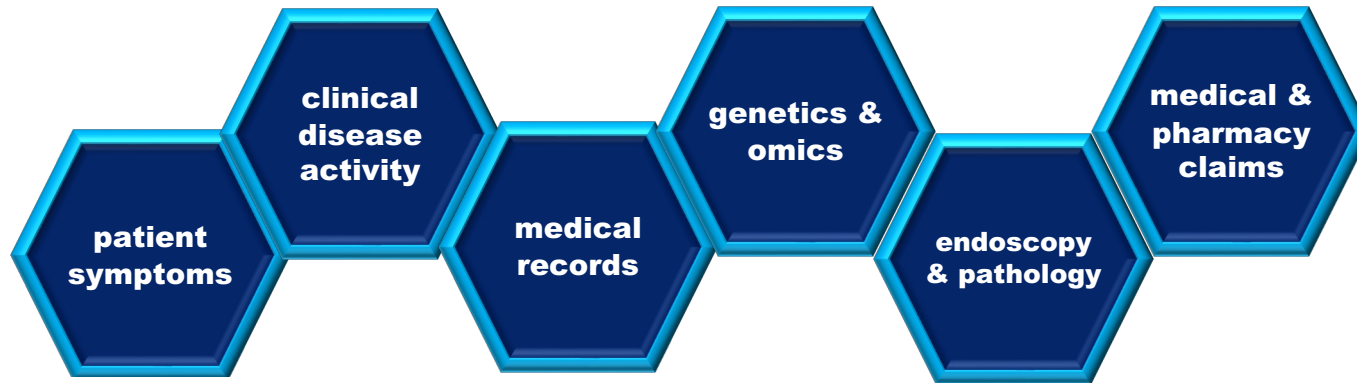
## DISEASE EVENTS

- Endoscopy
- Surgery
- Infusions

# No more research silos. Unlocking the full value of data.

Research Network

Data Ecosystem Partners



# Better Data for Better Outcomes

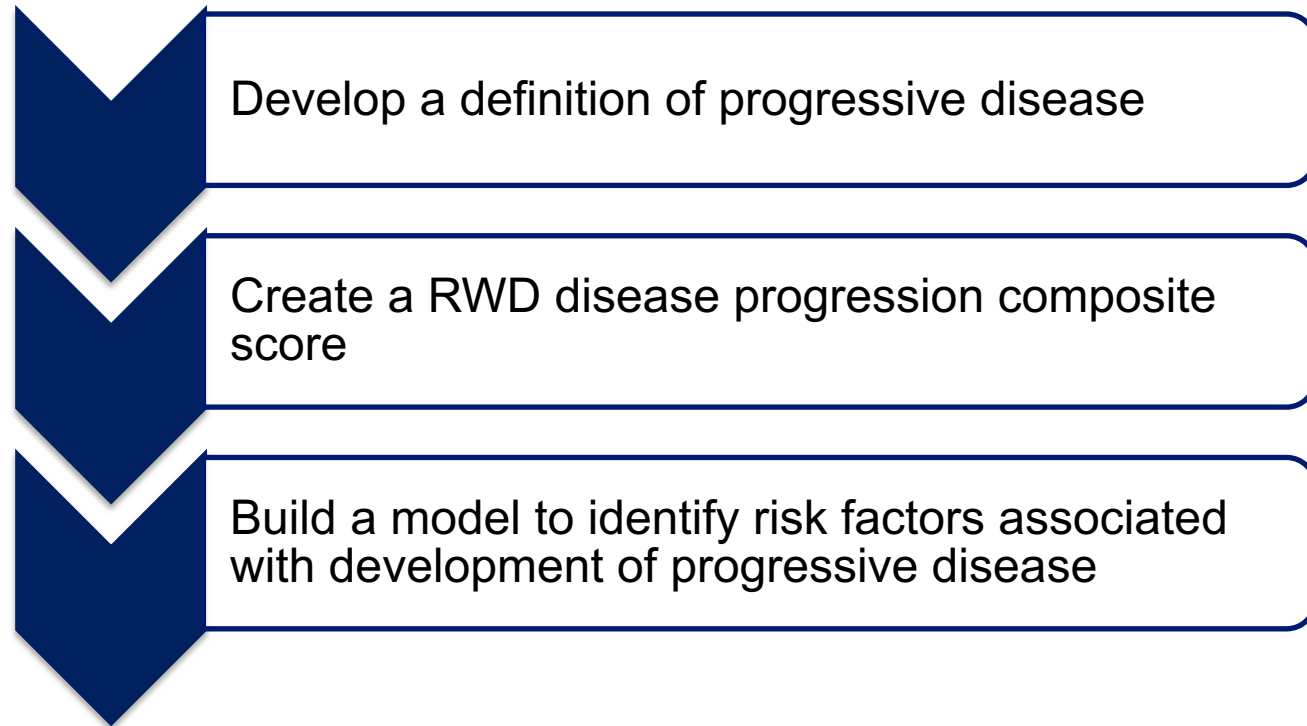
Unparalleled, comprehensive data to better understand the complete picture of disease and patient journey

Characteristic	Study Programs	EHRs from Participating Sites	Claims
IBD diagnosis	✓	All local	All billed
Phenotype	✓	Free text	-
PROs / symptoms	✓	Mostly free text, some structured	-
QoL / experience	✓	-	-
Medications	Prescribed for IBD	Prescribed + OTC	Filled Rx
Labs	Selected IBD-related results	Most results	Performed w/out results
Comorbidities	IBD-related comorbidities	All local	All billed
Procedures / imaging	Selected results	Most results	Performed w/out results
Surgical complications	✓	Mostly free text	
Demographics	✓	✓	-
Social history & SDOH	✓	Present, but often incomplete	-
Genetics & 'omics	✓	-	-

# Addressing the unmet need

There remains a high unmet medical need for IBD patients with progressive disease despite treatment with available therapies that utilize varied mechanisms of action.

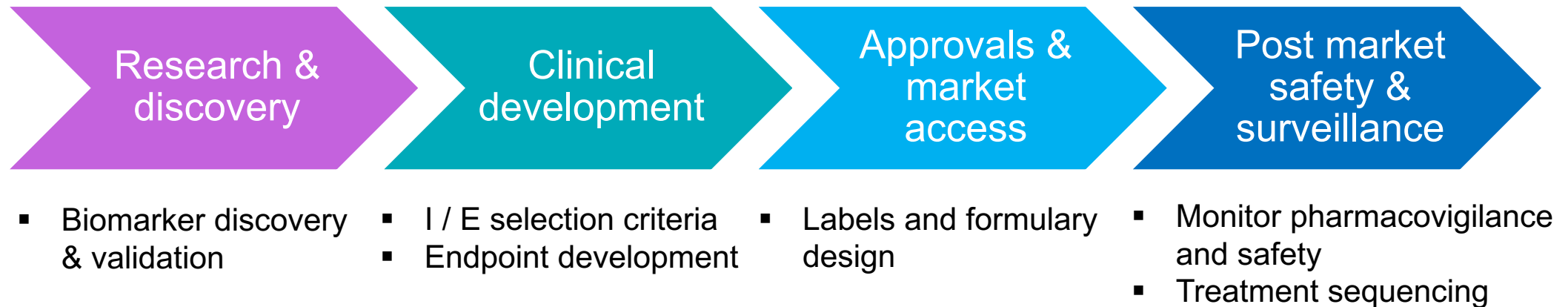
Established a pre-competitive, multi-stakeholder working group to:





# Precision medicine value chain simplified

## Use Case: Development of a prognostic biomarker of disease progression



# A new paradigm for IBD research



# Igniting great science for a brighter future

Over 200 research projects across life science companies and academic institutions



# A path to improve the lives of IBD patients

