



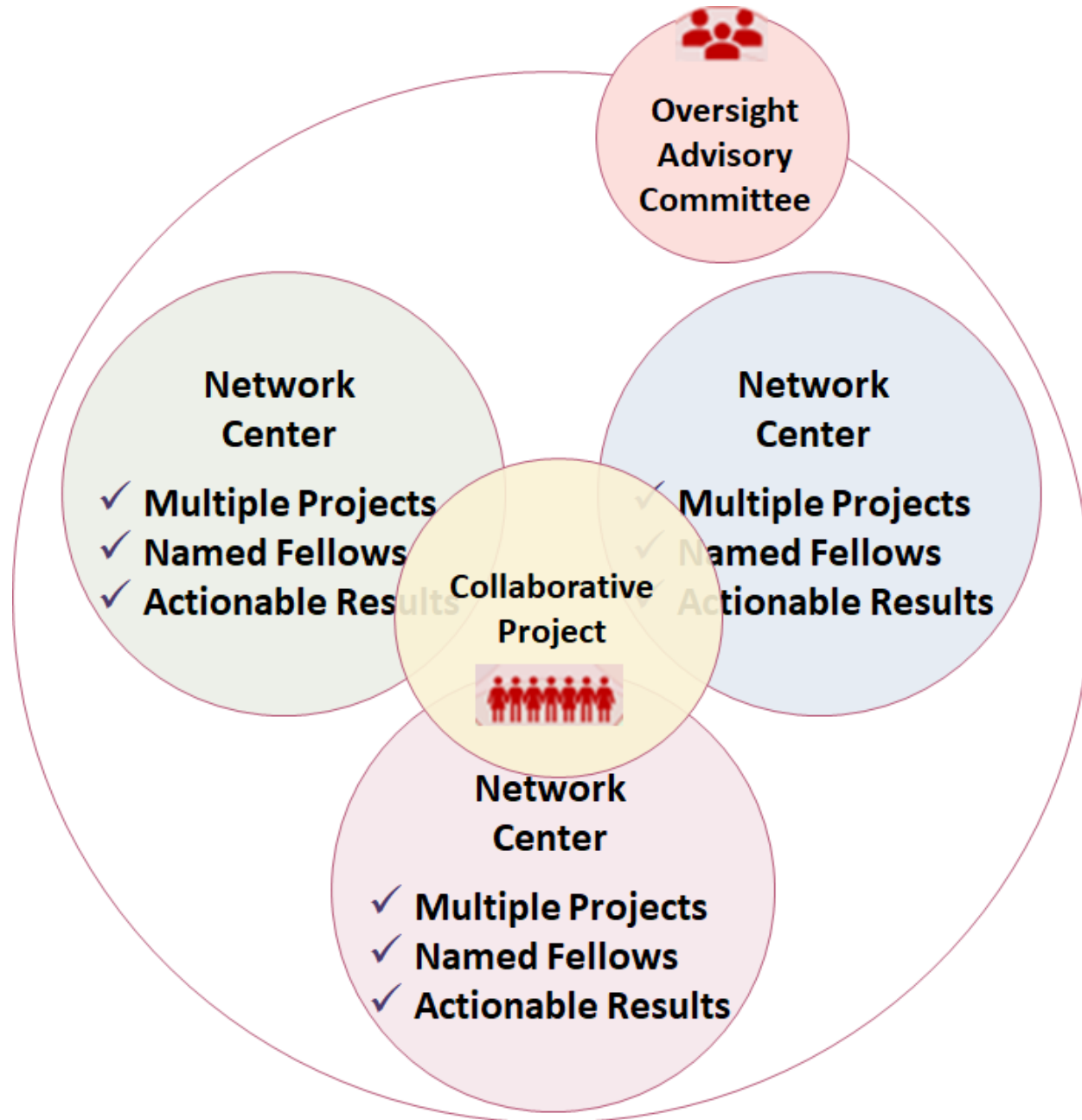
Strategic Network Awards Community Research Partnerships

Heather Caine

National Director, Research & Grants Administration

American Heart Association

Strategically Focused Research Networks - SFRNs



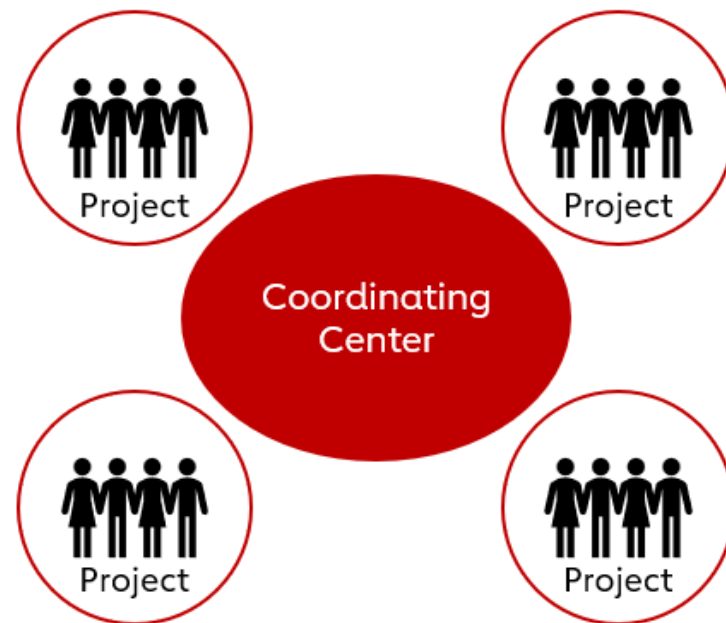
- Collaborative initiative that brings basic, clinical and population researchers together to address key strategic issues.
- 3-4 Center Institutions are funded as part of this mechanism which makes up a network.
- Each Center funded is responsible for leading 2-3 projects for the duration of the award.

Health Equity Research Networks - HERNs

Connects academic institutions and community organizations to address adverse social determinants of health and advance care for impacted communities

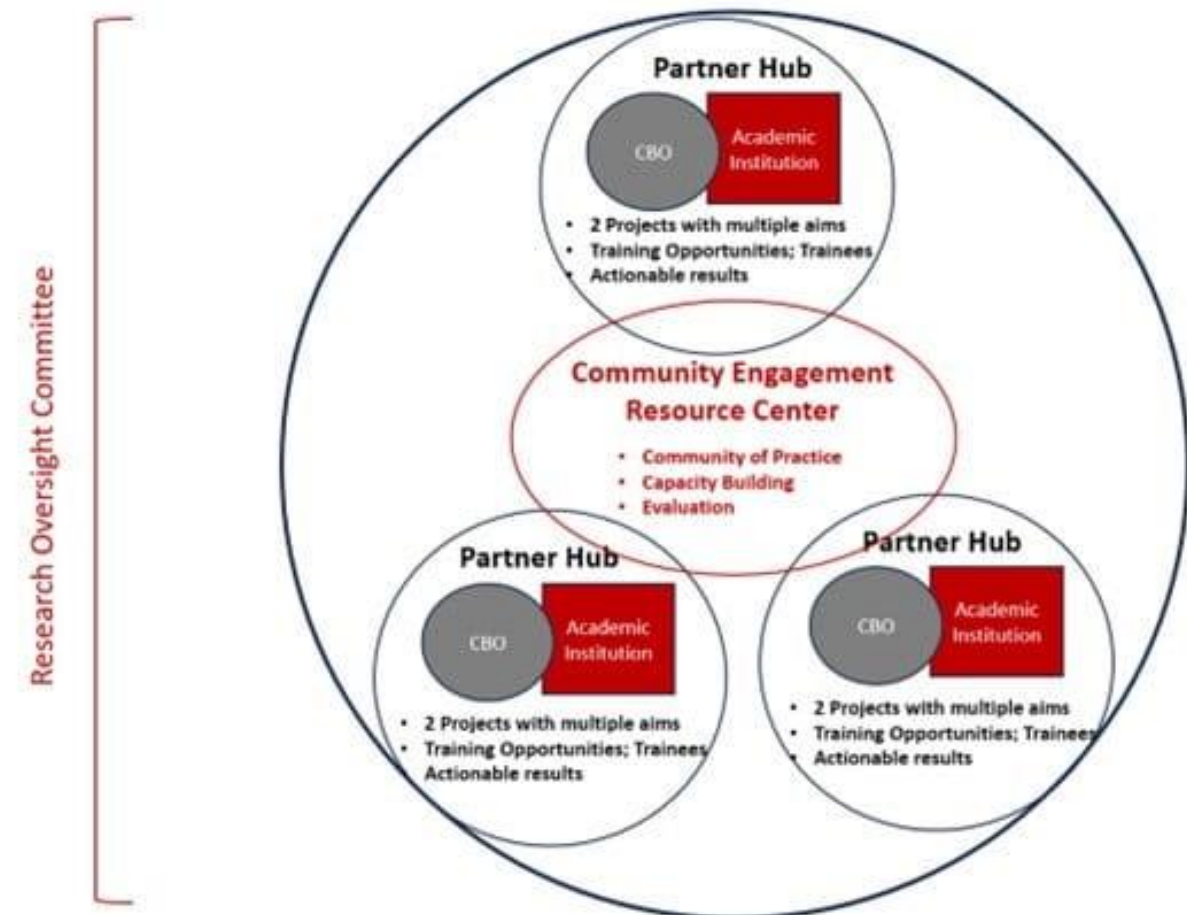
Prevention of Hypertension, Maternal & Infant Health and Rural Health HERNs

Coordinating Center oversees the research and engagement of funded 4-5 projects.



Community-Driven Research Approaches

- 3 Partner Hubs (1 Community-Based Organization & 1 Academic Institution Project)



HERNs Awarded \$20 Million Each



Prevention of Hypertension

2021-2025

Testing approaches to help people overcome barriers to health faced by living in neighborhoods with poor access to health care, healthy foods and places to exercise.



Disparities in Maternal & Infant Health Outcomes

2022-2026

Determining strategies to help people overcome social determinants of health that increase risk for CV disease and poor pregnancy-related health outcomes.

Rural Health

2023-2027

Developing and testing strategies to improve access to cardiovascular health in rural areas and bring research findings to more widespread practice by disseminating policy to policymakers and by conducting workforce training events.



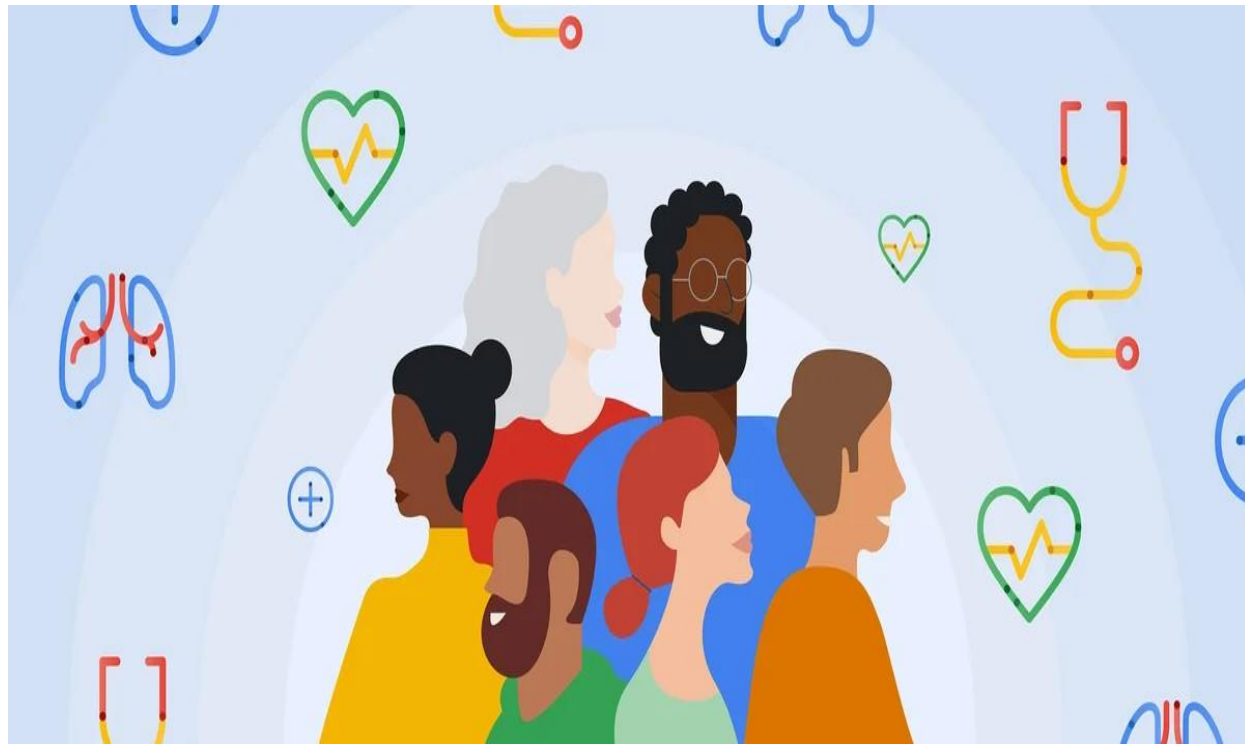
Community-Driven Research Approaches

2024-2029

Co-funded partnership to reduce inequities and improve health outcomes and aims to build a foundation of trust within the community. This network was co-funded by the Robert Wood Johnson Foundation.



Lessons Learned



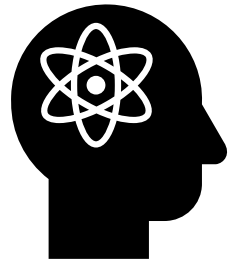
- More intentional inclusion of people historically excluded from research (both trainees and research participants).
- The number of projects per Network could differ based on specific topic.
- The goal of the Oversight Advisory Committee (OAC) is to oversee research efforts for the duration of each Network – We have learned to better navigate delays/concerns leading to improved monitoring and reporting.
- The duration of the most recent HERN has been extended to 5 years to accommodate the researchers as we have learned that building trust and relationships can take time within certain communities and populations.



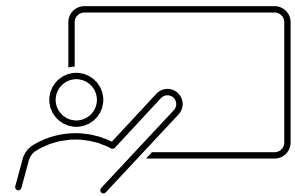
Thank You

JUSTResearch Primary Objective

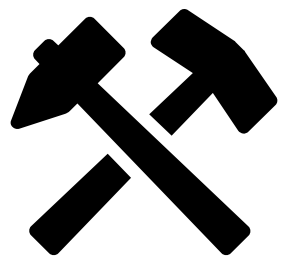
Advancing community driven health equity research through:



Generating new knowledge on how exposure to incarceration affects cardiovascular risk factor management among incarcerated people and their family members



Training a cadre of leaders who will innovate new ways of partnering and engaging with incarcerated people and their families in the design and implementation of research



Building new infrastructure and tools for conducting decentralized clinical trials that engages those most marginalized from health science research and *creating new paths for health equity*

JUSTResearch Partner Hub

Shared
Aim 1

Identify feasible and ethical strategies for engaging individuals who are incarcerated in cardiovascular research.

Shared
Aim 2

Test the effectiveness of strategies for engagement that arise in Aim 1 to improve participation of incarcerated individuals in cardiovascular research.

Shared
Aim 3

Examine the association between increasing exposure to incarceration and cardiovascular health.

Output 1

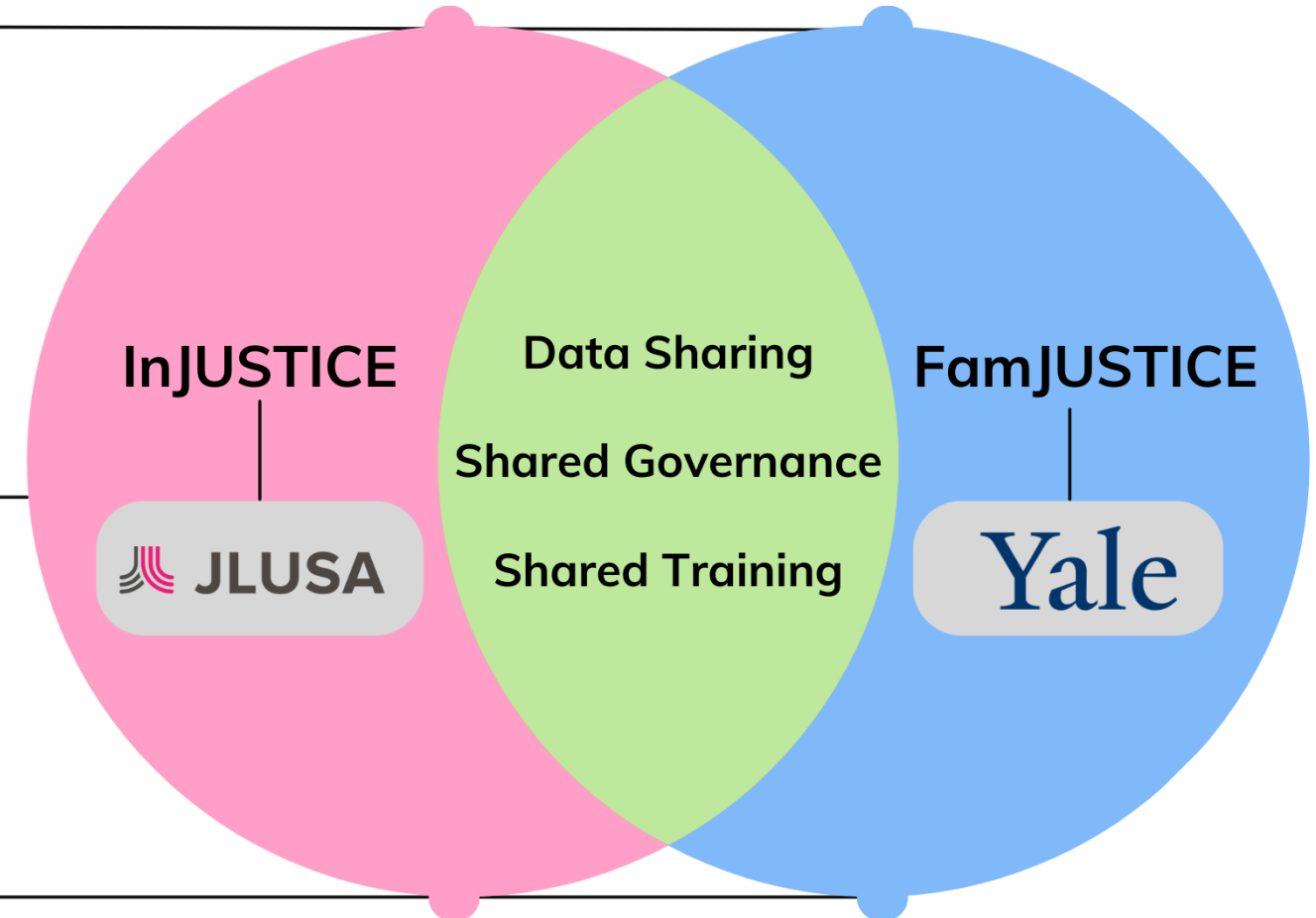
Novel engagement strategies for marginalized populations

Output 2

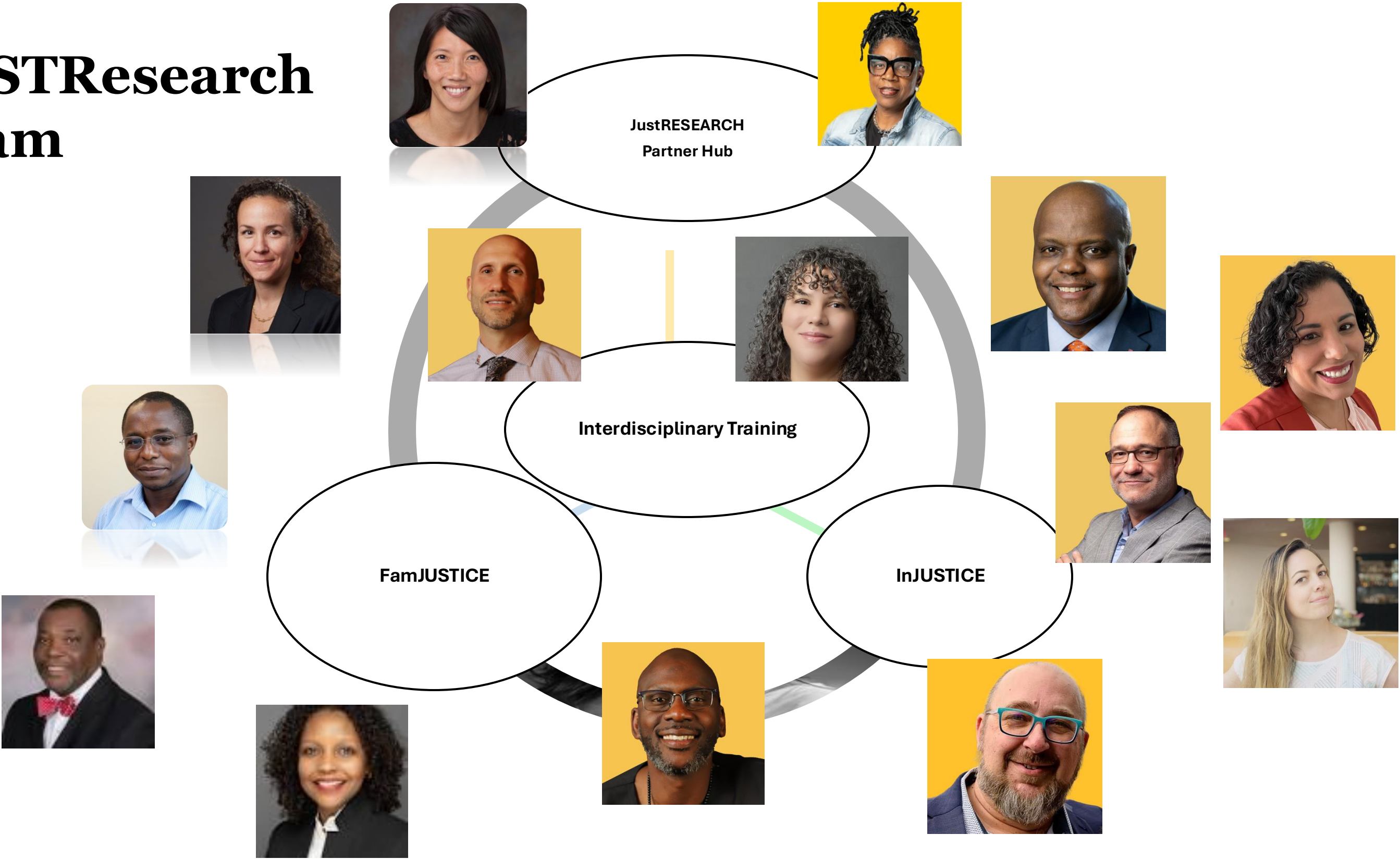
Toolbox for working with incarcerated people on research

Output 3

Decentralized Trials



JUSTResearch Team



Lessons Learned

- Beneficial to have an established, strong working relationship-opportunity to measure and monitor over the grant period.
- Community partner/academic partnership for clinical research takes a LOT of effort and needs to be adequately funded.
- Giving grant money directly to the community partner is empowering and consistent with community engaged research principles (trust-based funding).

Lessons Learned

- To build capacity on both ends requires different skillsets. Grant planning should consider this with RFAs prepared accordingly.
- Most CBOs have limited cash reserves, may need to consider signing installment to get them started.